

Lee County Government 2022 American Rescue Plan Act Recovery & Resilience Plan

STATE AND LOCAL FISCAL RECOVERY FUNDS



Annual Report 2

Period Covered: July 1, 2021 – June 30, 2022

Due: July 31, 2022

Lee County, Florida
Board of County Commissioners
P.O. Box 398
Fort Myers, FL 33902
239-533-2221
www.leegov.com/ARPA



[PAGE INTENTIONALLY LEFT BLANK]

American Rescue Plan Act
Lee County, Florida
2022 ARPA Recovery & Resilience Plan
Report Date: July 31, 2022

Contents

I. General Overview.....2

- A. Executive Summary..... 2
- B. Uses of Funds 3
- C. Promoting Equitable Outcomes..... 4
- D. Community Engagement 7
 - 1. Engaging Community-based Service Partners, Nonprofits and Small Businesses7
 - 2. Public Survey—Impacts of COVID-19 on Households, Businesses and Non-Profit Agencies8
 - 3. Public Meetings.....10
 - 4. Information Sharing10
 - 5. Project Specific Examples of Community Engagement.....13
- E. Labor Practices 16
- F. Use of Evidence..... 17

II. Performance Report19

- A. ARPA Program Management Summary (June 30, 2022) 19
- B. Expenditure Summary..... 22

III. Project Inventory.....23

- 1. Public Health 23
 - Assistance to Households 23
 - 1.1 Lee Memorial Health System Mobile Vaccine23
 - 1.4 Emergency Operations Center Expansion Project26
 - 1.7 Lee County Sheriff Traffic Detail at Covid Testing Site and Monoclonal Antibody Site27
 - Behavioral Health..... 28
 - 1.12A Behavioral Health Staffing Recruiting and Retention.....28
 - 1.12B Behavioral Health Coordinated Care System34
- 2. Negative Economic Impacts..... 35
 - Assistance to Households 35

2.01	Food Distribution Organizations to Address Food Insecurity	35
2.10	Workforce Training and Certification Grant (Micro and Rapid Credentialing)	36
2.11	Support Non-Profit Childcare Providers to Increase Capacity	43
2.15	Affordable Housing Grants to Nonprofits.....	44
2.16	Increase Street Outreach and Case Worker Staff to Address Housing Stability Needs	46
2.25	Support Non-Profit, Extended Learning and After-School Programs that Address Educational Disparities	56
	Assistance to Small Businesses	66
2.29	Small Business Resiliency Assistance	66
2.30	Small Business Technical Assistance	67
	Assistance to Nonprofits	75
2.34	Nonprofit Human Services Grant and Capacity Building	75
	Aid to Impacted Industries.....	77
2.35	Aid to Tourism, Travel, or Hospitality	77
3.	Public Sector Capacity	80
	General Provisions	80
3.1	Emergency Management Staff (21)	80
4.	Infrastructure	81
	Water and Sewer	81
5.1	Fort Myers Beach Water Reclamation Facility (WRF) Major Improvements.....	81
5.15	Improvements Cyber Security Risk Assessment and Hardware Software Improvements	82
	Broadband.....	82
5.21	Broadband Gap Analysis	82
6.	Revenue Replacement	83
6.1	Big Carlos Pass Bridge Project.....	83
7.	Administrative.....	84
7.1A	Consulting Services for Oversight and Compliance of American Rescue Plan Funds.....	84
7.1B	Administrative Expenses – Human Services	84

I. General Overview

A. Executive Summary

The American Rescue Plan Act, Coronavirus State and Local Fiscal Recovery Funds provided Lee County with \$149,675,549 to respond to the negative economic and health impacts of the COVID-19 pandemic on our communities, residents, and businesses. U.S. Treasury, the awarding agency, has given counties substantial discretion, yet defined eligible and restricted uses of the funds, to determine the ways that best suit the needs of the county's constituents. Treasury requires fund recipients to organize their use of funds into specific categories as summarized in the Lee County Approved Allocations by Expense Categories Table below. In addition, the initial, quarterly, and annual project reports are submitted to Treasury and published online to account for the use of the funds.

The *Lee County's American Rescue Plan Act Recovery & Resilience Plan* is the second annual required report. The Plan summarizes Lee County's allocation of ARPA funds through June 30, 2022. The Lee Board of County Commissioners' process to determine how funds should be used involved a broad array of information gathering, discussions, and planning. Participants in the process included County departments, small business and public interest groups, non-profit organizations, public health entities, education providers, and the public. The resulting priorities were discussed and finalized through the Board's public meeting process, which reflects "government in the sunshine principles". As required, the Board was careful to approach each project design, implementation, and execution with equity in mind especially for underserved communities—with equal access to funding opportunities for projects and equal eligible access to services provided by the funds.

The Plan shows Lee County Government's internal operational and infrastructural enhancements that respond to the pandemic. It also shows the County's community engagement, to help respond to the crisis, that has resulted in formal agreements with many community collaborators including the public health system, the Sheriff's Office, three public universities, the local School Board, and over seventy nonprofit organizations. Herein each project is summarized to describe its owner, services, demographic reach, equitable approach, use of research-based or research-producing evidence, and performance objectives.

Table 1. Lee County Approved Allocations by Expense Categories Table

Expense Categories	Allocated Funding	Percent of Funding
Public Health	\$30,766,525	21%
Negative Economic Impacts	\$48,410,000	32%
Public Health-Negative Economic Impact: Public Sector Capacity	\$5,580,981	4%
Infrastructure	\$10,689,875	7%
Revenue Replacement	\$48,241,146	32%
Administrative	\$5,987,022	4%
American Rescue Plan Funds	\$149,675,549	100%

B. Uses of Funds

Lee County recognizes ARPA funding as an unprecedented opportunity to support robust and equitable investments that address immediate recovery needs – especially in the most disproportionately impacted communities – and long-term resiliency building.

The list below shows Lee County’s allocations by expense category and broadly identifies our planned projects and outcomes.



Public Health (EC 1): \$30,766,525 for public health and pandemic response to address needs, including:

- \$16.5 million for the emergency operations expansion project
- \$9 million for mental health funding to address staffing needs for youth and adult behavioral health services
- \$5 million for the creation of a behavioral health coordinated care system
- \$250,000 for pediatric mobile vaccine unit targeting children and families with transportation challenges
- \$58,607 for sheriff traffic and security detail at testing sites



Negative Economic Impacts (EC 2): \$48,410,000 to respond to negative economic impacts of the COVID-19 public health emergency, including to households and small businesses:

- \$17 million for nonprofit human services grants to increase or ensure the continuation and expansion of direct services to the community
- \$7.5 million for affordable housing projects to increase housing availability
- \$4.5 million for food distribution service organizations
- \$4 million for small business resiliency grants to provide economic relief from the negative economic impact of the pandemic
- \$3 million for workforce training and certifications to improve employment opportunities and financial security
- \$3 million to support nonprofit childcare providers to increase childcare unit availability
- \$3 million for nonprofit capacity building (United Way)
- \$2.5 million to aid tourism and hospitality businesses
- \$1.8 million for homelessness prevention and assistance
- \$1.6 million for extended learning and afterschool programs for youth to address academic, social, and emotional needs
- \$475,000 to provide small business and nonprofit technical assistance to address the negative economic impact of COVID-19



Public Health-Negative Economic Impact: Public Sector Capacity (EC 3): \$5,580,981 to provide public health capacity in the public sector, including:

- \$5.6 million for Lee County Public Safety – Emergency Management to address staffing shortages and deficiencies



Premium Pay (EC 4): Premium pay programs prioritizing low-income workers.

- No Premium pay projects



Water, sewer, and broadband infrastructure (EC 5): \$10,689,875 to pursue projects, including:

- \$8.5 million for two capital projects at the Fort Myers Beach Water Reclamation Facility (Major Improvements)
- \$2.1 million for Lee County Utilities cybersecurity risk assessment, hardware, and software improvements
- \$100,000 for a Broadband Gap Analysis to identify broadband need with emphasis on unserved and underserved communities



Revenue Replacement (EC 6): \$48,241,146 – Calculated Revenue Replacement to account for loss revenue due to the COVID-19 public health emergency funds. For government services only.

- \$48.2 million toward the Big Carlos Pass Bridge Project



Administrative (EC 7): \$5,987,022 million for ARPA administrative expenses (4% of total Lee County ARPA allocation)

- Lee County, through a competitive solicitation, secured a management consultant to assist with administration of the ARPA funding received
- Lee County added Grant Management positions

C. Promoting Equitable Outcomes

Lee County Government values diversity and welcomes input from all interested parties, regardless of cultural identity, background, or income level. Moreover, Lee County believes that the best programs and services result from careful consideration of the needs, and input from, its various communities involved in transportation, public transportation, human services, and other government services.¹

Lee County does not tolerate discrimination in any of its programs, services, or activities. Pursuant to Title VI of the Civil Rights Act of 1964 and other federal and state authorities, the County will not exclude anyone from participation, deny benefits, or discriminate against anyone on the grounds of race, color, national origin, sex, age, disability, religion, income, or family status.²

Lee County embraced an equity-focused mindset to address the COVID-19 pandemic. The County sought to ensure that historically underserved communities and disproportionately impacted individuals and classes were informed of the funding opportunities and had a chance for input into the design of the ARPA

¹ “Civil Rights Act, Title VI.” *Lee County Southwest Florida*, 5 Aug. 2021, www.leegov.com/civilrights.

² “Civil Rights Act, Title VI.” 2021.

projects. These potential equity impacts guided our community engagement, funding availability notifications, project selection, and design.

As the County engaged the community, categories of need emerged. Need-specific projects were designed to address the overarching categorical service goals. Lee County integrated an equity focus at the categorical and project level. The County's overarching categorical equity plans are listed below. Each project's equity focus can also be seen as we report equity design, goals and target, awareness, access and distribution, and outcomes.

Lee County Service Category Equity Plans

Public Health Services will ensure safe and efficient access to vaccines with emphasis on removing barriers for underserved communities.

Behavioral Health Services will ensure that attainable behavioral and mental health services are available for all Lee County citizens, particularly those in underserved communities, through adequate staff recruiting, training, retention efforts, community education, and outreach, and operational innovation and support.

Food Distribution Services will minimize food insecurity for low- and moderate-income and underserved communities through a network of food distribution providers, community food banks, community kitchens, and delivery services.

Workforce Training and Credentialing Services will provide training and credentialing opportunities to individuals who want and are available for work, including those who are unemployed or underemployed, or who are employed but seeking a position with greater opportunities for economic advancement, especially those in underserved communities.

Childcare Quality and Access Services will provide funding to improve the availability, quality, and parental access to childcare by providers who are resourced with technical assistance, training, certification, and equipment required to service communities in areas underserved or with high-needs for childcare and low-and mod-income households specifically.

Affordable Housing Services will increase the stock of affordable long-term housing for qualifying individuals and families through the development properties that will become affordable, high-quality, safe housing units.

Services of Unhoused Persons will increase outreach and supportive services needed to help the unhoused persons and households.

Youth Extended Learning will increase access and quality of extended learning and afterschool programs that provide informed advocacy, guidance, support, resources, referrals, and tools needed to overcome economic and social barriers and achieve academic, career, and life success for low- and medium income youth and their families and for underserved community youth.

Small Business and Nonprofit Technical and Economic Resiliency Assistance will provide small businesses and nonprofits in qualified Census Tracts or Low-to-Moderate income designated areas or who were negatively impacted by the COVID-19 pandemic with technical assistance to improve their business

planning and execution and provide one-time financial aid to address COVID-related negative economic impacts.

Nonprofit Human Services Direct Service Delivery and Capacity Building will ensure the adequate availability of need-driven community-based direct human services while building organizational resiliency through targeted projects that assist low- to moderate-income and aid for operational enhancements.

D. Community Engagement

Lee County ARPA Project Collaborators

70+ Nonprofits

**Three Universities &
The School Board (Adult Ed)**

The Public Health System | The Sheriffs Office

1. Engaging Community-based Service Partners, Nonprofits and Small Businesses

Throughout the response to the pandemic, Lee County engaged community-based service delivery partners, economic development organizations and local businesses organizations to remain aware of the effect and to identify need that arise from the pandemic.

The examples below illustrate how the County departments and senior leadership solicited and gathered feedback regarding pandemic-related needs. These communication channels seeded ARPA ideas that were discussed in public meetings on October 19, 2021, March 1, 2022, and June 21, 2022, wherein the Board selected projects and allocated funds.

Human and Veteran Services Community Engagement

- Survey of nonprofits' partners;
- Consultation with various community-based organizations including Lee Health, Salus Care, Salvation Army, CASL, United Way, Early Learning Coalition, Collaboratory, Central Florida Behavioral Health Network, and Midwest Food Bank; and
- Survey of Partnering for Result youth services providers.

Economic Development Community Engagement

- Monthly Real Estate Research Institute surveys assessing pandemic impact on business activity;
- Regular consultation with all chambers of commerce;
- COVID -19 related regular information sharing with the Southwest Florida Economic Development Alliance, Small Business Development Centers, and U.S. Small Business Administration (SBA);
- Scheduled regular two-way information sharing with industry partners on the Lee Cares program and not-for-profit sectors regarding pandemic impact on culture, housing, and human services;
- Weekly meetings with retail representatives regarding operation constraints;
- Weekly supply chain meetings with Lee Health;
- Weekly calls with hospitality industry partners to provide the latest information and assess local business conditions;
- Regular calls to workforce training partners including Career Source;
- Visitor and Convention Bureau Community Engagement;
- Weekly information sharing and gathering calls with industry partners; and

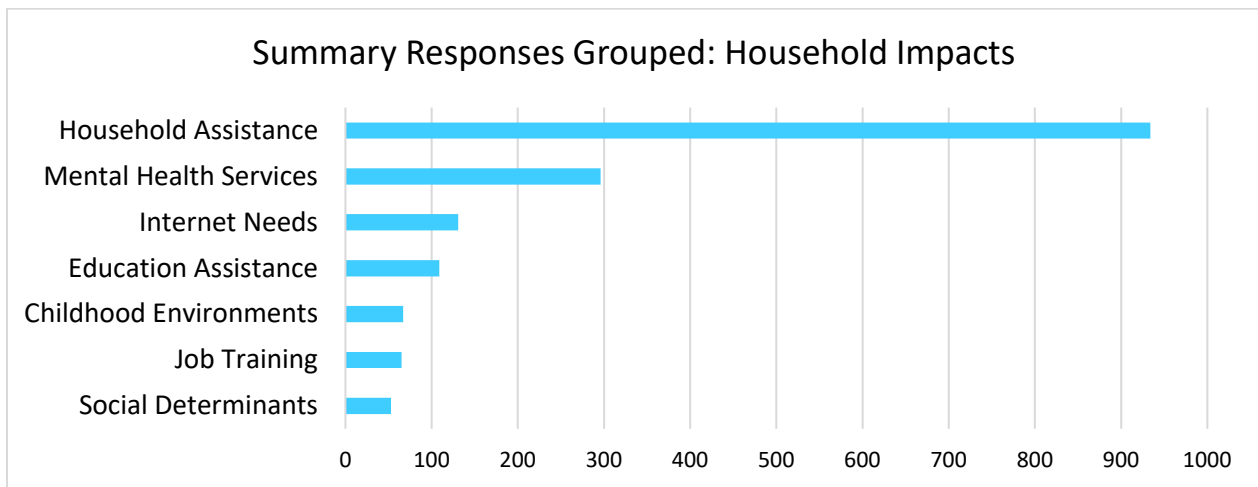
- Conducted periodic "willingness to travel" consumer sentiment research in key markets.

2. Public Survey—Impacts of COVID-19 on Households, Businesses and Non-Profit Agencies

- Lee County’s Community Impact survey was available in multiple languages (e.g. English, Spanish and Haitian Creole).
- Survey collected data on pandemic impacts to households and workplaces, and feedback on potential project categories
- Survey was shared through County social media, flyers to community distribution partners and lists, flyers displayed in County public lobbies (Parks, Animal Services, Transit, Community Development, Library, Public Safety, and Solid Waste), shared in multiple newsletters from County, local municipalities, and community groups.

Survey Data Highlights

Question: How has the COVID-19 pandemic personally impacted you or your household? Select all that apply:



NOTES: Household Assistance: Paying for rent, utilities, food, other bills; reduced work hours or unemployment.

Mental Health Services: Household member struggled with mental or emotional health or substance abuse/use

Internet Needs: Internet problems made work or school from home difficult

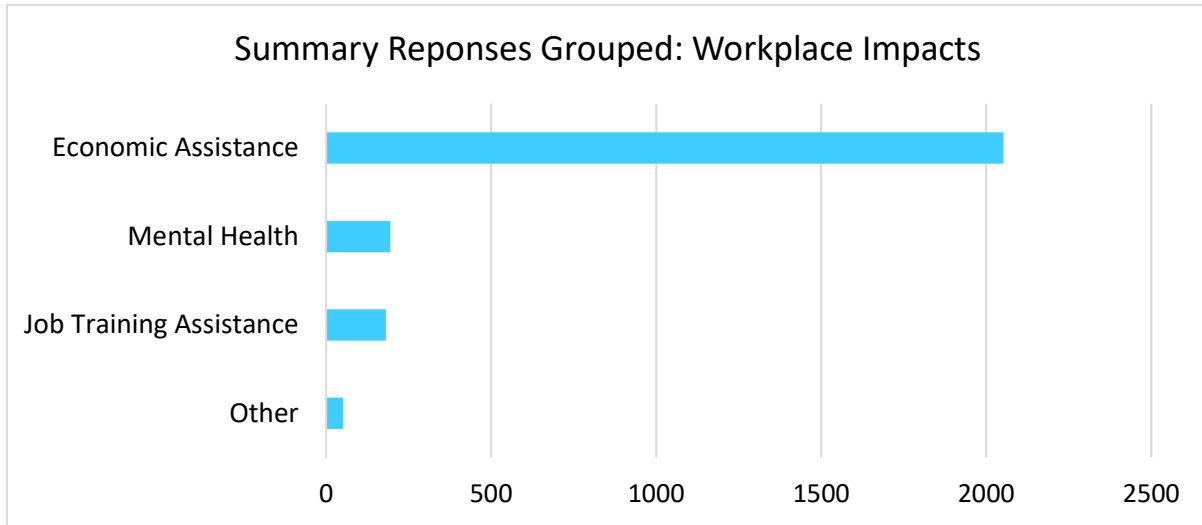
Education Assistance: Children in household had problems with learning progress or social development

Childhood Environments: Problems finding or paying for childcare

Job Training: Adult experienced interruption in education or training or trouble getting educational or work assistance

Social Determinants: Problem finding support needed from social services/nonprofits

Question: How has the pandemic impacted your workplace? Select all that apply:

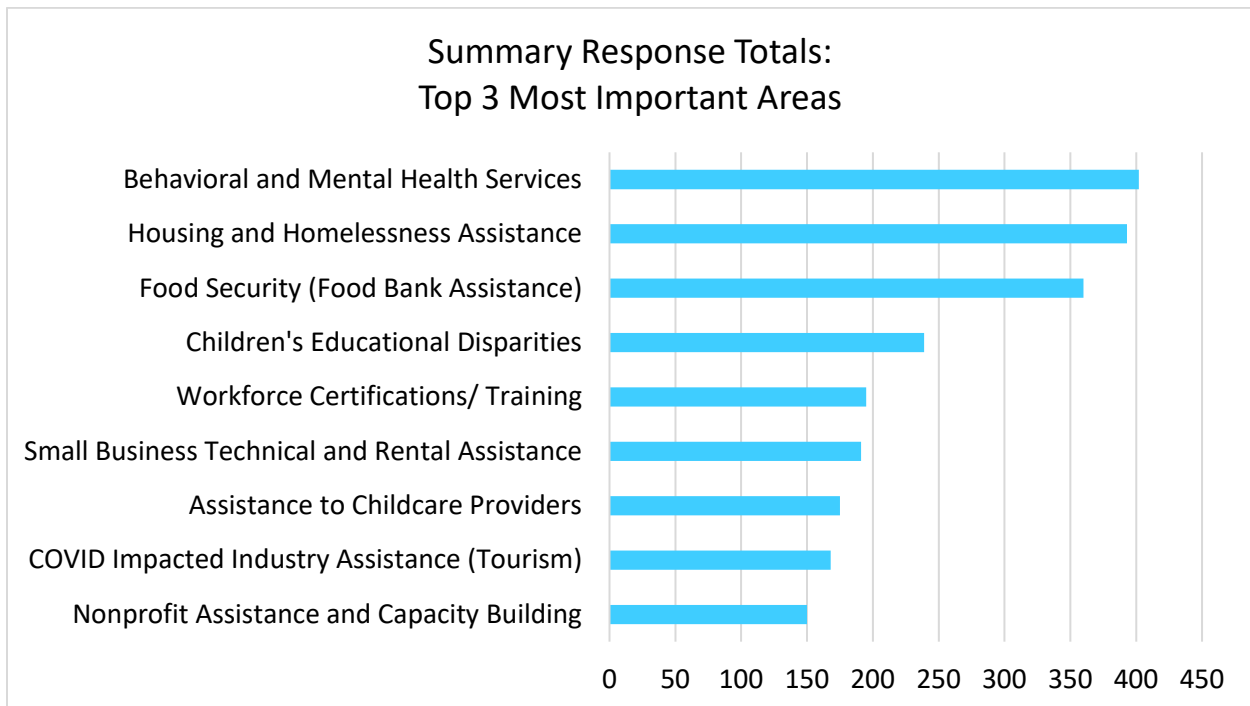


NOTES: Economic Assistance: Problems paying commercial rent/mortgage, suppliers, vendors, or workers. Problems hiring and retaining workers, decreases in sales and overall financial position negatively affected, additional expenses due to COVID.

Mental Health: Someone in the workplace struggled with mental or emotional health.

Job Training Assistance: Problems finding qualified workers.

Question: From the list of project categories below select your top 3 (three) most important areas.



3. Public Meetings

The Lee County American Rescue Plan Act (ARPA) project allocations are always on regular board agendas, with opportunity for public comments. Meeting agendas are published online ahead of the meeting. To date there have been nine regular board meetings to approve ARPA project allocations and obligations and one board workshop. The Lee County ARPA website contains a log of those meeting agenda items and backup. [Meetings & Documents \(leegov.com\)](https://www.lee.gov/Meeting%20Documents)

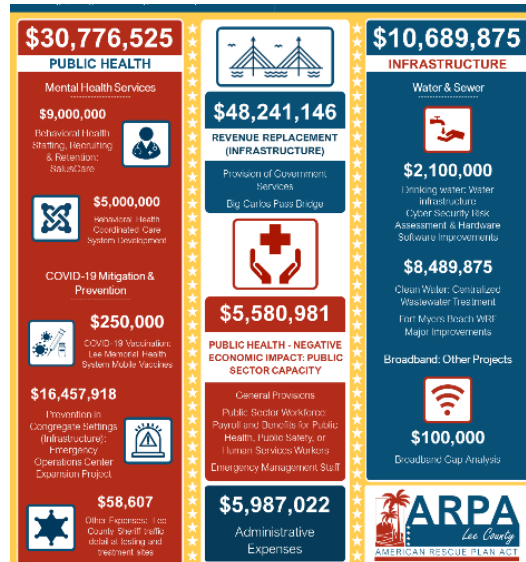
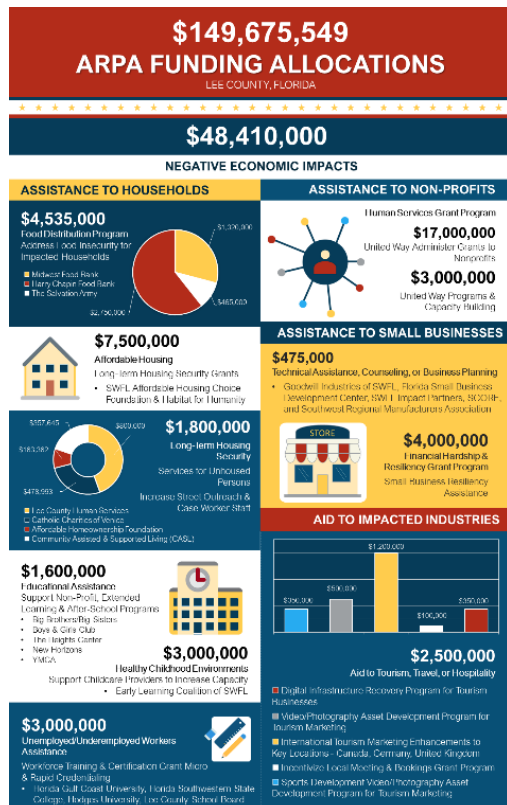
The Lee Board of County Commissioners held an ARPA planning workshop in September 2021 to identify Phase One projects. At the regular board meeting on October 19, 2021, following public discussion the Board approved the Phase One projects. Phase Two projects were approved following discussion in a public meeting on March 1, 2022. On June 21, 2022, the board updated its allocations in the various expenditure categories.

4. Information Sharing

Lee County communicates the ARPA funding allocations in through (a) web site; (b) press releases; (c) social media; and (d) earned media.

(a) Website [American Rescue Plan Act \(ARPA\) \(leegov.com\)](https://www.lee.gov/American%20Rescue%20Plan%20Act%20(ARPA))

The ARPA home page summarizes funding allocations and project expenditures. The site also summarizes the project program on the infographic below. The report to US Treasury is also published. Additional pages contain information such as: meetings and documents, workforce and technical assistance program contact information, and references for the subrecipients. [Allocations \(leegov.com\)](https://www.lee.gov/Allocations)



(b) Press releases can be reviewed within the Meetings and Documentation section of the Lee County ARPA webs site. [Meetings & Documents \(leegov.com\)](https://www.leegov.com/Meetings%20Documents)

Samples:

- March 21, 2022: *Nonprofits can apply now for Lee County American Rescue Plan Act funding*
- April 21, 2022: *Lee County Economic Development and community partners offer workforce and technical assistance programs*
- June 7, 2022: *Lee Commissioners approve agreements for ARPA extended learning and after-school programs*
- June 21, 2022, r1: *Lee Commissioners allocate \$7.5 million to affordable housing developments*
- June 21, 2022, r2: *Lee Commissioners approve ARPA funding for human service projects recommended by United Way*

(c) Social Media and Newsletter samples:



PRIORITY AREAS FOR LEE COUNTY

- Public Health
- Negative Economic Impacts from the COVID-19 Pandemic
- Services to Disproportionately Impacted Communities
- Infrastructure
- Administrative Needs

American Rescue Plan

The Lee Board of County Commissioners on Tuesday directed staff to implement the first phase of Lee County's American Rescue Plan Act (ARPA) Recovery & Resilience Plan using a portion of the direct federal assistance provided to Lee County to be obligated by the end of 2024.

Prioritized areas for use of funding include public health, negative economic impacts resulting from the COVID-19 pandemic, services to disproportionately impacted communities, infrastructure and administrative needs.



American Rescue Plan Act

On Tuesday, the Lee Board of County Commissioners authorized a combined total of \$23.5 million in American Rescue Plan Act (ARPA) funds to local nonprofits in Lee County.

Projects funded include two agreements for affordable housing and a variety of projects recommended by United Way to deliver direct human services including mental health, homelessness recovery, healthcare, youth programs, food security, workforce training, violence prevention and others.


[Learn More](#)




ARPA Plans

Click [here](#) to view details of upcoming workforce training and small business technical assistance programs for Lee County's American Rescue Plan Act initiatives, and click [here](#) to view

each of the business partners collaborating in these efforts. The Lee County Board of County Commissioners continue to work diligently with the Economic Development Office (EDO) to develop ARPA programs to assist the community that continues to be impacted by COVID-19.



Lee County wants to know how COVID-19 impacted your household or workplace



Lee County received \$149 million under the American Rescue Plan Act (ARPA) to respond to adverse impacts of the COVID-19 pandemic.


The Lee Board of County Commissioners will use ARPA funds to meet the community's needs within the eligible expense categories.

[Complete this survey to share your pandemic impacts](#) and feedback for ARPA recovery and resilience planning.

Visit leegov.com/ARPA for more information.

FOR IMMEDIATE RELEASE
City of Sanibel News Release

Sanibel, Florida
September 23, 2021
Contact: City Manager's Office
(239) 472-3700





Lee County Announces COVID Community Impact Survey - Access Survey Below
Sanibel Residents Invited to Share Input & Ideas

The City of Sanibel has received notice Lee County has announced a Community Impact Survey to determine the impacts of Covid-19 on Lee County households and businesses.

Sanibel residents who are interested in sharing their input about the impacts of Covid-19, and ideas for the American Rescue Plan recovery and resilience programs in Lee County may participate in the survey by clicking this [link](#).

-END-


Lee County COVID-19 Community Impact Survey

The Lee County Economic Development Office would like to make you aware of the American Rescue Plan Act (ARPA). Lee County has been allocated over \$149 million dollars through ARPA to combat the public health and economic severities of COVID-19. In order to sufficiently assist the public with funds, the county has created a Community Impact Survey which will collect data to effectively distribute funds to the areas in which people have suffered most. The feedback received will allow for the county to assess which issues need highest priority.

Information about ARPA and the decisions Lee County plans to make can be found at <http://leegov.com/ARPA>

Impacts of COVID-19 on Households, Businesses and Non-profit Agencies Complete the survey below to share your pandemic impacts and feedback for ARPA recovery and resilience planning. <http://survey123.azusa.com>

Lee County would like to hear from you. The County received \$149 million under the American Rescue Plan Act (ARPA) to respond to adverse impacts of the COVID-19 pandemic. The Lee Board of County Commissioners will use ARPA funds to meet the community's needs within the eligible expense categories, and is looking for community input on how COVID-19 affects households, businesses, and non-profit agencies. Complete the County survey to share your pandemic impacts and feedback for ARPA recovery and resilience planning.



(d) Earned Media Samples:

June 23, 2022 – NBC-2

Upgrades and additional affordable housing coming to Lee County

April 28, 2022 – ABC7

Local universities add additional courses after money donated by Lee County

April 28, 2022 – WINK news

Lee County grant funds ‘micro-credential’ classes at FGCU, FSW, and Hodges

April 27, 2022 – Fox4 news

Workforce training and certification program to aid Lee County residents affected by COVID-19

April 27, 2022 – ABC7

Local universities add additional courses after money donated by Lee County

March 19, 2022 – News-Press

Lee to fund homeless services, workforce training

March 2, 2022 – News-Press

American Rescue Plan to pay big chunk of new Big Carlos Pass bridge

September 21, 2021 – NBC-2

Lee County residents asked to share their COVID-19 experience in new survey

5. Project Specific Examples of Community Engagement

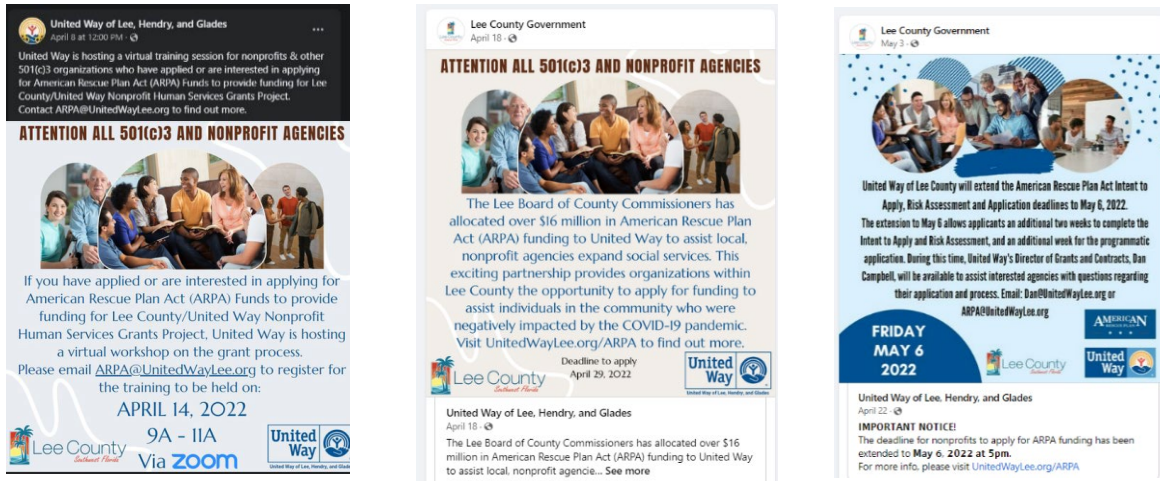
Community Engagement Sample - United Way Project

As required by ARPA, the County specified that equity and community engagement should drive the strategy of identifying solutions that could respond to the broadest and most vulnerable who were impacted by the COVID-19 pandemic. Therefore, throughout its Human Service Grant project United Way and the County staff evaluated their equity and community engagement strategy.

United Way developed a communication plan to help ensure that all eligible nonprofits were invited to participate in funding opportunities for projects that address the needs of the communities and groups they serve. United Way issued a Notice of Funding Availability (NOFA) using four main outlets (1) notice was emailed to United Way partner network of agencies and through the Human Services Information Network of agencies; (2) United Way collaborated with Board Communication staff to provide press releases regarding funding availability to all Lee County media outlets; (3) the NOFA was promoted on the United Way social media channels and published online at unitedwaylee.org/arpa/; and, (4) a notice was published through the News-Press.

United Way Nonprofit Human Services Grant webpage included the application deadline details, the Notice of Funding Available document, applicant eligibility, timeline with key dates and the application link.

Figure 1. United Way Social Media Samples



Community Engagement Samples - Workforce Training and Certification

FGCU Board of Trustees program awareness and outreach efforts include social media marketing (platforms such as Facebook, Instagram, LinkedIn, and Twitter), audio advertisements (platforms such as Spotify and YouTube), video advertisements (platforms such as YouTube and Hulu), and through proactive community recruitment activities. FGCU faculty and participants in the IBM Skills Academy pilot course were featured in a WINK News story and FGCU has published one Op-ed article within the News Press local media outlet and received mention in local publication, Gulfshore Life. FGCU partners with FutureMakers Coalition to promote short-term credentialing options to underserved communities through community-based recruitment events. Community navigators promote enrollment through career fairs, local recruitment events at non-profit organizations, and through their social media channels.

Figure 2. News Clip Workforce Training



Community Engagement Samples - Small Business Technical Assistance and Small Business Resiliency Assistance Grants

SWFL Impact Partners hosted a community engagement open house event. There were 239 certified MBE/DBE were invited and 30+ attended the event. Speakers discussed the opportunities available for ARPA funded technical assistance and resiliency assistance grants.

Figure 3. Photos from the Meet and Greet Open House at the SWFL Enterprise Center Foundation



Community Engagement Samples - Aid to Tourism, Travel or Hospitality

The Lee County Visitor and Convention Bureau communicated the digital optimization project through eblasts and their newsletter to industry partners; the audience was tourism related businesses including local accommodations, attractions, restaurants, chambers, transportation companies and ancillary businesses tied to tourism. The meeting bookings project was communicated through Trade shows, conferences, hosted client events, and sales calls, their primary audience was meeting planners.

E. Labor Practices

All Lee County Government ARPA capital projects will follow procurement processes conforming to the Lee Board of County Commissioners Procurement Ordinance 18-22 and federal grant requirements. This ordinance is a high-level policy that regarding the County's procurement regulations, including organizational controls and accountability for procurement of goods and services. In addition, the Procurement department and internal project-owner departments will monitor all ARPA funded projects for compliance with federal grant and federal labor standards. After these projects have started the details will be reported.

The proposed Lee County ARPA projects that will promote and be monitored for strong labor standards are below.

Table 2. Labor Practices Project Table

Expenditure Categories (ARPA)	Project Title
1.4 Prevention in Congregate Settings (Nursing Homes, Prisons/Jails, Dense Work Sites, Schools, Childcare facilities, etc.)	Emergency Operations Center Expansion Project
2.15 Long-term Housing Security: Affordable Housing	Affordable Housing Grants to Nonprofits - Southwest Florida Affordable Housing Choice Foundation Inc.
2.15 Long-term Housing Security: Affordable Housing	Affordable Housing Grants to Nonprofits - Habitat for Humanity of Lee and Hendry County, Inc.
5.1 Clean Water: Centralized Wastewater Treatment	Fort Myers Beach WRF Major Improvements
6.1 Provision of Government Services	Big Carlos Pass Bridge Project

F. Use of Evidence

As required for the specified expense categories, Lee County will ensure that those ARPA projects are either evidence-based or designed with a research agenda to study their effectiveness. Learning Agendas will be developed for all evidence-producing projects.

Below is a list of Lee County’s projects that have funds allocated to evidence-based or evidence-producing practices

Table 3. Evidence Plans

Project Name	Evidence Plan
1.12 Mental Health Services*^	
Behavioral Health Staffing Recruiting and Retention - SalusCare	Evidence-producing project with learning agenda
2.10 Assistance to Unemployed or Underemployed Workers (e.g., job training, subsidized employment, employment supports or incentives)*^	
Workforce Training and Certification Grant (Micro and Rapid Credentialing) - The School Board of Lee County, Florida	Evidence-producing project with learning agenda
Workforce Training and Certification Grant (Micro and Rapid Credentialing) - Florida Gulf Coast University Board of Trustees	Evidence-producing project with learning agenda
Workforce Training and Certification Grant (Micro and Rapid Credentialing) - Florida Southwestern State College	Evidence-producing project with learning agenda
Workforce Training and Certification Grant (Micro and Rapid Credentialing) - Hodges University, Inc.	Evidence-producing project with learning agenda
2.11 Healthy Childhood Environments: Child Care*^	
Support Childcare Providers to Increase Capacity - Early Learning Coalition of SWFL	Evidence-producing project with learning agenda
2.15 Long-term Housing Security: Affordable Housing *^	
Affordable Housing Grants to Nonprofits - Southwest Florida Affordable Housing Choice Foundation Inc.	To be reported when available
Affordable Housing Grants to Nonprofits - Habitat for Humanity of Lee and Hendry County, Inc.	To be reported when available
2.16 Long-term Housing Security: Services for Unhoused Persons*^	
Increase Street Outreach and Case Worker Staff to Address Housing Stability Needs - (3) HVS positions	Evidence-based: Housing First Model
Increase Street Outreach and Case Worker Staff to Address Housing Stability Needs - Catholic Charities Diocese of Venice	Evidence-based: Housing First Model; Rapid Rehousing; Critical Time Intervention (CTI), SOAR (SSI/SSDI outreach, access, and recovery) trained case managers
Increase Street Outreach and Case Worker Staff to Address Housing Stability Needs - Affordable Homeownership Foundation Inc.	Evidence-based: Housing First Model

Project Name	Evidence Plan
Increase Street Outreach and Case Worker Staff to Address Housing Stability Needs - Community Assisted and Supportive Living Inc.	Evidence-based: Designated as a Projects for Assistance in Transition from Homelessness (PATH) provider organization; Housing First Approach; Uses Functional Assessment Rating Scale (FARs) Assessments; Case Management; Peer Support; and Trauma Informed Care
2.25 Addressing Educational Disparities: Academic, Social, and Emotional Services*^	
Support Non-Profit, Extended Learning and After-School Programs that Address Educational Disparities - Big Brothers Big Sisters of the Sun Coast, Inc	Evidence-based: Big Brothers Big Sisters' One to One Mentoring Program is an evidence based program is found here: Making a Difference in Schools
Support Non-Profit, Extended Learning and After-School Programs that Address Educational Disparities - Boys and Girls Club of Lee County, Inc	Evidence-based: Project Learn; Summer Brain Gain; Triple Play; SMART Leaders, and Passport to Manhood
Support Non-Profit, Extended Learning and After-School Programs that Address Educational Disparities - The Heights Center	Evidence-based: Peer Tutoring and Response Groups; Instructional Conversations and Literature Logs; Leveled Literacy Intervention; PATHS (Promoting Alternative Thinking Strategies)
Support Non-Profit, Extended Learning and After-School Programs that Address Educational Disparities - New Horizons of SWFL	Evidence-based: Continuing Education for staff who support - Super Kids and Teen Clubs – strategies for effective tutoring
Support Non-Profit, Extended Learning and After-School Programs that Address Educational Disparities – YMCA of Southwest Florida	Evidence-based: BellXcel Power Scholars program; Afterschool Programming Evidence Base; Summer Learning Loss and Benefits of Summer Learning Evidence Base
2.30 Technical Assistance, Counseling, or Business Planning*^	
Small Business Technical Assistance - SBDC	Evidence-producing project with learning agenda
Small Business Technical Assistance - SCORE	Evidence-producing project with learning agenda
Small Business Technical Assistance - SWFL Impact Partners	Evidence-producing project with learning agenda
Small Business Technical Assistance - Goodwill	Evidence-producing project with learning agenda
Small Business Technical Assistance - Southwest Regional Manufacturers Association	Evidence-producing project with learning agenda

II. Performance Report

Performance tracking and reporting for each project is the responsibility of the project owner (organization). Performance data will be reported quarterly by the Lee County staff. All subrecipient agreements include performance reporting requirements. Internal projects may have performance requirement outlined in the project summaries. Lee County Budget Services will provide official expenditure data and collaborate with Performance Management and Analytics to merge the data for official reporting. The report will be reviewed and approved by County Administration staff. County Administration will approve the submittal U.S. Treasury.

Lee County’s overarching goals for ARPA funds will be measured through the success of individual projects and expenditure categories. The broad overall objective for ARPA funding includes:

- All APRA-CSLFRF funds will be expended (in some cases obligated) on the BOCC identified projects by December 31, 2024
- All projects will respond to compliance monitoring
- All projects will be audit-ready and without findings
- Increased capacity within the Lee Community for successful federal grant awards and management
- Increased community resiliency in the case of downturns, disasters, or public health emergencies

Below is a schedule of the phase for each allocated project.

A. ARPA Program Management Summary (June 30, 2022)

Figure 4. ARPA Project Phases

Expenditure Categories (ARPA)	Project Title	Project Concept Impact Evaluation & Eligibility	Board Approved Allocation	Definition & Project Planning	Launch & Execution	Performance & Monitoring	Project Close
1: Public Health							
COVID-19 Mitigation & Prevention							
1.1	Lee Memorial Health System Mobile Vaccine – Lee Health	✓	✓	✓	✓	✓	
1.4	Emergency Operations Center Expansion Project	✓	✓	✓			
1.7	Lee County Sheriff traffic detail at Covid testing site (CenturyLink)and monoclonal antibody site (Old Bonita Library)	✓	✓	✓	✓	✓	✓
Behavioral Health							
1.12	Behavioral Health Staffing Recruiting and Retention – SalusCare	✓	✓	✓	✓	✓	
1.12	Behavioral Health Coordinated Care System	✓	✓	✓			

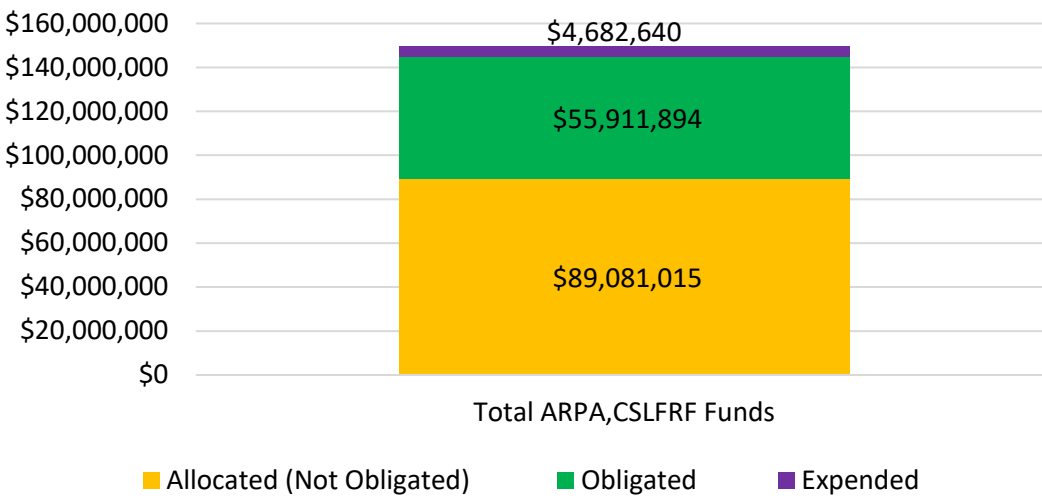
Expenditure Categories (ARPA)	Project Title	Project Concept Impact Evaluation & Eligibility	Board Approved Allocation	Definition & Project Planning	Launch & Execution	Performance & Monitoring	Project Close
2: Negative Economic Impacts							
Assistance to Households							
2.1	Food Distribution Program Enhancement to Address Food Insecurity - Harry Chapin Food Bank	✓	✓	✓	✓		
2.1	Food Distribution Program Enhancement to Address Food Insecurity - Midwest Food Bank	✓	✓	✓	✓		
2.1	Food Distribution Program Enhancement to Address Food Insecurity - The Salvation Army	✓	✓	✓	✓		
2.10	Workforce Training and Certification Grant (Micro and Rapid Credentialing) - The School Board of Lee County, Florida	✓	✓	✓	✓		
2.10	Workforce Training and Certification Grant (Micro and Rapid Credentialing) - Florida Gulf Coast University	✓	✓	✓	✓	✓	
2.10	Workforce Training and Certification Grant (Micro and Rapid Credentialing) - Florida Southwestern State College	✓	✓	✓	✓	✓	
2.10	Workforce Training and Certification Grant (Micro and Rapid Credentialing) - Hodges University, Inc.	✓	✓	✓	✓		
2.11	Support Childcare Providers to Increase Capacity – Early Learning Coalition of SWFL	✓	✓	✓	✓	✓	
2.15	Affordable Housing Grants to Nonprofits - SWFL Affordable Housing Choice Foundation	✓	✓	✓	✓		
2.15	Affordable Housing Grants to Nonprofits - Habitat for Humanity	✓	✓	✓			
2.16	Increase Street Outreach and Case Worker Staff to Address Housing Stability Needs - (3) HVS positions	✓	✓	✓	✓	✓	
2.16	Increase Street Outreach and Case Worker Staff to Address Housing Stability Needs - Catholic Charities Diocese of Venice	✓	✓	✓	✓	✓	
2.16	Increase Street Outreach and Case Worker Staff to Address Housing Stability Needs - Affordable Homeownership Foundation Inc.	✓	✓	✓	✓	✓	
2.16	Increase Street Outreach and Case Worker Staff to Address Housing Stability Needs - Community Assisted and Supportive Living Inc.	✓	✓	✓	✓	✓	
2.25	Support Non-Profit, Extended Learning and After-School Programs that Address Educational Disparities - Big Brothers Big Sisters	✓	✓	✓	✓		

Expenditure Categories (ARPA)	Project Title	Project Concept Impact Evaluation & Eligibility	Board Approved Allocation	Definition & Project Planning	Launch & Execution	Performance & Monitoring	Project Close
2.25	Support Non-Profit, Extended Learning and After-School Programs that Address Educational Disparities - Boys and Girls Club	✓	✓	✓	✓		
2.25	Support Non-Profit, Extended Learning and After-School Programs that Address Educational Disparities - The Heights Center	✓	✓	✓	✓		
2.25	Support Non-Profit, Extended Learning and After-School Programs that Address Educational Disparities - New Horizons	✓	✓	✓	✓		
2.25	Support Non-Profit, Extended Learning and After-School Programs that Address Educational Disparities - YMCA	✓	✓	✓			
Assistance to Small Businesses							
2.29	Small Business Resiliency Assistance	✓	✓	✓	✓		
2.30	Small Business Technical Assistance - SBDC	✓	✓	✓	✓	✓	
2.30	Small Business Technical Assistance - SCORE	✓	✓	✓	✓	✓	
2.30	Small Business Technical Assistance - SWFL Impact Partners	✓	✓	✓	✓	✓	
2.30	Small Business Technical Assistance - Goodwill	✓	✓	✓	✓	✓	
2.30	Small Business Technical Assistance - Southwest Regional Manufacturers Association	✓	✓	✓	✓	✓	
Assistance to Non-Profits							
2.34	Nonprofit Human Services Grant Program - United Way	✓	✓	✓	✓	✓	
2.34	Nonprofit Human Services & Capacity Building - United Way	✓	✓	✓	✓	✓	
Aid to Impacted Industries							
2.35	Digital Infrastructure Recovery Program for Tourism Businesses Experiencing Negative Economic Impact	✓	✓	✓	✓		
2.35	Tourism Industry Partner Video/Photography Asset Subsidy to Assist with Small Business Economic Recovery	✓	✓	✓			
2.35	International Tourism Marketing to Recover from Economic Losses in Tourism from Canada, Germany, and the United Kingdom	✓	✓	✓			
2.35	Reimbursement Grant to Incentivize Local Meeting Bookings to Rebound from Negative Economic Impact to the Tourism Industry	✓	✓	✓	✓		

Expenditure Categories (ARPA)	Project Title	Project Concept Impact Evaluation & Eligibility	Board Approved Allocation	Definition & Project Planning	Launch & Execution	Performance & Monitoring	Project Close
2.35	VCB/EDO/Sports Development Videography & Photography Assets for Tourism Marketing to Counteract Negative Economic Impact	✓	✓	✓			
3: Public Health-Negative Economic Impact: Public Sector Capacity							
General Provisions							
3.1	Emergency Management Staff (21)	✓	✓	✓			
5: Infrastructure 5: Infrastructure							
Water and Sewer							
5.1	Fort Myers Beach WRF Major Improvements	✓	✓				
5.15	Cyber Security Risk Assessment and Hardware Software Improvements	✓	✓				
Broadband							
5.21	Broadband Gap Analysis	✓	✓	✓	✓		
6: Revenue Replacement							
6.1	Big Carlos Pass Bridge Project	✓	✓	✓			
7: Administrative							
7.1	Management Consultant	✓	✓	✓	✓		
7.1	Grant Mgmt. HVS (4) Positions	✓	✓	✓	✓		

B. Expenditure Summary

Figure 5. Lee County ARPA Expenditure Summary



III. Project Inventory

As of June 30, 2022, the Lee County Board of County Commissioners has allocated 100% of its the American Rescue Plan Act – Coronavirus State and Local Fiscal Recovery Funds to projects as listed below.

1. Public Health

Assistance to Households

1.1 Lee Memorial Health System Mobile Vaccine

Project ID: ARPA-PH011A

Funding Amount: \$250,000

Project Duration: April 1, 2021 – September 20, 2022

Project Expenditure Category: 1.1 COVID-19 Vaccination



Project Overview:

Lee Health will provide mobile vaccination units for vaccines to the pediatric population in Lee County including school sites but also sites in underserved communities. The mobile vaccination unit will consist of a pediatric ambulance to act as a mobile COVID-19 vaccination site and a team of healthcare professionals to include: one (1) Emergency Medical Technician, one (1) Customer Service Representative, one (1) Pharmacist (or one (1) Pharmacy Technician) and two (2) Registered Nurses to administer COVID-19 vaccinations to the pediatric population, ages 5 and up. Lee Health will also provide all necessary equipment and supplies to operate the mobile COVID-19 vaccination site including but not limited to: COVID-19 vaccinations, necessary forms and waivers, tables, chairs, and writing instruments.



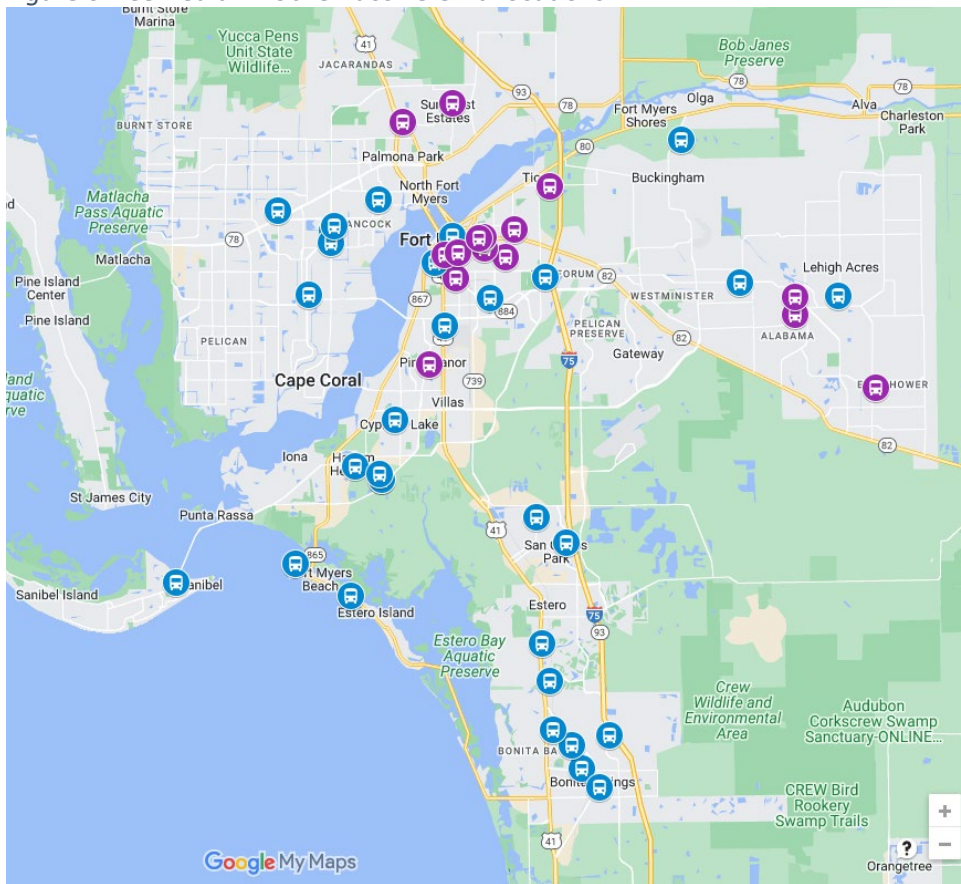
Status of Completion: Less than 50% Completed

Project Demographic Distribution:

All Vaccine Doses			
Ages 5-11	Ages 12-17	Age 18+	Total
1,791	1,100	1,098	3,989

Lee County Location Summary

Figure 6. Lee Health Mobile Vaccine Unit Locations



 Mobile Vaccine Location;  Mobile Vaccine Location in a QCT

Promoting Equitable Outcomes: The goal was to reach children and families that may not otherwise be



able to receive a vaccination for COVID-19 due to transportation or other factors. Everyone was welcome and there was no cost for the vaccine. The mobile vaccine clinic was walk-up only and traveled throughout Lee County to Qualified Census Tracts (QCTs) and other underserved communities. Lee Health partnered with the School District of Lee County to bring the unit to middle and high schools in case parents wanted to get their children vaccinated at those locations.

Use of Evidence: This section is not applicable to this project per Treasury Reporting Guidance.

Performance Measured to Date:

Days the Mobile Vaccination Unit was Active	Vaccination Events (Using the Pediatric Mobile Vaccine Unit) Lee County Locations	Mobile Vaccine Unit Visits (some locations had multiple visits)
132	47	109
Total Vaccines Provided in Lee County (1,2 and 3 Doses)	Number of Doses to Children by Mobile Unit	Number of Doses to Adults by Mobile Unit
3,989	2,891	1,098

Performance Outcomes Measured to Date:

Increase access to vaccination sites.

This project succeeded in organizing 109 visits to 47 different sites where 3,989 doses of COVID-19 vaccine were given.

Success Comments:

At almost every location, there were people who said they would not have been vaccinated if it were not for these services. This included recipients who are homeless and minorities in disadvantaged communities. Having professional pediatric specialized staff gave an extra layer of comfort to families and children as they have extensive experience with the population. Staff would often sing to the children, play games, blow bubbles, and provide distraction to facilitate the process - **one child told her mother she would only go back if the one nurse who was there that sang to her would sing again.** Many families appreciated being able to provide the experience together, adult and children together getting vaccinated.

1.4 Emergency Operations Center Expansion Project

Project ID: ARPA-PH014A

Funding Amount: \$16,457,918

Project Duration: TBD – December 31, 2024

Project Expenditure Category: 1.4 Prevention in Congregate Settings (Nursing Homes, Prisons/Jails, Dense Work Sites, Schools, Childcare facilities, etc.)*^

Project Overview:

The existing Emergency Operations Center is located at 2675 Ortiz Avenue, Fort Myers, FL. 33905. The expansion of this location addresses the inadequacies of the existing facility and reduces risks toward accomplishing the outcome of strong, coordinated leadership for all future community emergency responses in all phases of activation. Enhancements to this facility will (a) Double the square footage from 29,000 to 66,000 to accommodate essential County; key local, state and federal agencies; and representatives of nonprofit and citizen groups as they coordinate emergency response activities; (b) Install advanced technologies to optimize situational awareness and ensure that communications remain operational throughout an activation; and (c) Create synergistic daily operations through co-location of countywide emergency call-taking services and the Lee County Department of Transportation's traffic operations.

The EOC expansion will especially benefit agencies that prevent the loss of lives and property and the organizations that help victims of a disaster, including the Lee County Sheriff's Office Dispatch, Lee County EMS and Fire Control, and Lee County Department of Transportation operations. The co-location of dispatch and operations will reduce emergency call processing times, while also streamlining operations during normal operations and activations.

Status of Completion: Not Started

Project Demographic Distribution: Not applicable for this project; it will support county-wide emergency management operations.

Promoting Equitable Outcomes: County-wide emergency management operations will be supported.

Use of Evidence: This section is not applicable to this project.

Performance: KPIs for this project are being developed and will be reporting in future performance reports.

- Project status as a % complete.
- Projected/actual construction start date
- Projected/actual initiation of operations date (month/year)
- Location
- Davis Bacon certification
- Did the project prioritize local hires
- Did the project have a Community Benefit Agreement

1.7 Lee County Sheriff Traffic Detail at Covid Testing Site and Monoclonal Antibody Site

Project ID: ARPA-PH017A, Lee County Sheriff

Funding Amount: \$58,607

Project Duration: October 1, 2021 – December 1, 2021

Project Expenditure Category: 1.7 Other COVID-19 Public Health Expenses (including Communications, Enforcement, Isolation/Quarantine)^

Project Overview:

The Sheriff Traffic Detail Monoclonal Antibody Test Site project is a new government service to provide security and public safety services to medical personnel and the public at the Century Link Stadium and Bonita Springs Monoclonal Antibody Covid-19 test sites. The project is fully funded through ARPA-SLFRF.

The project activities include the County Sheriff providing security and public safety for two COVID-19 test sites. Sworn uniformed officers staff the Sheriff's security teams. The teams provide pre-and during-operation security assessments, guide traffic, and respond to disruptive traffic and other security threats. The project provides a contingency for additional officers and equipment as the circumstance require.

Status of Completion: Completed

Project Demographic Distribution: Not Applicable for traffic detail. Testing and Antibody Sites were open to all.

Promoting Equitable Outcomes: Traffic detail ensures the safety and security of all workers and visitors at the testing and antibody sites.

Use of Evidence: This section is not applicable to this project per Treasury Reporting Guidance.

Performance Outcome: Effectively provided traffic detail at the testing and antibody sites, during high-volume period of October 2021 and November 2021.

Behavioral Health

1.12A Behavioral Health Staffing Recruiting and Retention

Project ID: ARPA-PH112A, SalusCare

Funding Amount: \$9,000,000

Project Duration: November 1, 2021 – December 31, 2024

Project Expenditure Category: 1.12 Mental Health Services*^

Project Overview:



The Behavioral Health Staffing, Recruiting, and Retention project enhances an existing service provided by SalusCare, a Lee County Government Human Services partner and contractor for Central Florida Behavioral Health Network. SalusCare has four 24-hour service centers offering crisis stabilization services, Baker Act Services, Transitional Living services, detox services, and residential substance abuse treatment for children. The major activities for this project include enhancing staff recruitment and training by providing eligible workers incentives and salary supplementation for hard-to-fill positions. Additionally, the project will fund workspace public and patient safety enhancements, technology equipment, and supplies.

Status of Completion: Completed less than 50%

Project Demographic Distribution:

Gender – Client Demographic Children			
Timeframe	Male	Female	Not Reported
Q1 2022	937	939	
Q2 2022	714	682	39

Age – Client Demographic Children			
Timeframe	0-17	18-59	60+
Q1 2022	1744	132	
Q2 2022	1435		

Gender – Client Demographic Adult			
Timeframe	Male	Female	Not Reported
Q1 2022	2913	3333	
Q2 2022	2411	2825	4

Age – Client Demographic Adult			
Timeframe	0-17	18-59	60+
Q1 2022	13	5084	1157
Q2 2022	0	4222	1018

Race/Ethnicity - Client Demographic Children	Q1 2022	Q2 2022
American Indian	1	1
American Indian/Black/African American/Unknown	1	
American Indian/Multi-racial	1	1
American Indian/Unknown	4	2
Asian	7	2
Asian/Multi-racial	1	1
Asian/Unknown	2	1
Asian/White	2	1
Black/African American	172	132
Black/African American/Multi-racial	4	5
Black/African American/Multi-racial/Other single race/White	1	
Black/African American/Multi-racial/Unknown	1	
Black/African American/Multi-racial/White	1	1
Black/African American/Native Hawaiian or Other Pacific Islander	1	1
Black/African American/Other single race	3	1
Black/African American/Other single race/Unknown		1
Black/African American/Unknown	24	13
Black/African American/White	24	12
Multi-racial	95	59
Multi-racial/Other single race	1	2
Multi-racial/Other single race/White	1	1
Multi-racial/Unknown	15	12
Multi-racial/Unknown/White	3	2
Multi-racial/White	38	31
Native Hawaiian or Other Pacific Islander	1	2
Other single race	26	19
Other single race/Unknown	3	1
Other single race/Unknown/White	3	2
Other single race/White	18	9
Unknown	471	370
Unknown/White	173	139
White	778	611

Race/Ethnicity - Client Demographic Adult	Q1 2022	Q2 2022
Alaskan Native/American Indian/Other/White	1	
Alaskan Native/White	2	1
American Indian	7	9
American Indian/Black/African American	1	1
American Indian/Unknown	1	1
American Indian/Unknown/White	1	
American Indian/White	6	5
Asian	12	15
Asian/Multi-racial	2	2

Asian/Other single race	4	4
Asian/Unknown	5	4
Asian/White	7	7
Black/African American	608	507
Black/African American/Multi-racial	10	8
Black/African American/Multi-racial/White	1	1
Black/African American/Other single race	9	10
Black/African American/Other single race/White	1	
Black/African American/Unknown	85	71
Black/African American/White	55	54
Multi-racial	137	124
Multi-racial/Other single race	6	5
Multi-racial/Other single race/Unknown	1	1
Multi-racial/Unknown	59	37
Multi-racial/Unknown/White	2	2
Multi-racial/White	123	114
Native Hawaiian or Other Pacific Islander	3	5
Native Hawaiian or Other Pacific Islander/Other single race		1
Native Hawaiian or Other Pacific Islander/White	4	1
Other single race	63	40
Other single race/Unknown	10	11
Other single race/Unknown/White	3	1
Other single race/White	84	78
Unknown	297	131
Unknown/White	641	547
White	4003	3433

Promoting Equitable Outcomes (Highlights):

- SalusCare prides itself in recognizing that each individual has the right to seek and receive behavioral healthcare treatment. Priority populations for our organization are pregnant and post-partum women, IV drug users and persons living with HIV.
- SalusCare does not deny treatment based on an individual’s inability to pay.
- It is also our goal to have a board and staff that is reflective of the patient population. Recruiting efforts have been expanded to reach populations we have not previously engaged with. Increased participation in job fairs and community events is one strategy we are engaging in.
- SalusCare has increased its participation in community events and attends most events it is invited to attend from churches, community groups and community partners. While digital resources are also used, SalusCare recognizes that in person contact allows for the building of rapport and increased engagement.
 - We will be partnering with Family Health Centers effective June 1 to have services co-located in their Lehigh office.
 - SalusCare is also the host agency for the Cape Coral United Way House which houses other social service organizations.
- SalusCare ensures that positions, that are being actively recruited, are accessible through our online application portal.

- In addition to this, we do have options for applicants to fill out a paper application if need be. We market our online application portal to online job boards.
- We partner with CareerSource of Southwest Florida to participate in job fairs.
- As part of our Recruitment Plan with the funds, we will be partnering with local colleges/tech schools to create internships. We will also partner with area High Schools to start talking about the Behavioral Health field and the types of positions that are available, from entry level positions up through positions that require certifications/degrees.

Use of Evidence (Highlights):

Type of program: Evidence-Producing

Learning Agenda - Hypothesis/Action Statement: SalusCare will reduce staffing shortages and increase support capacity for youth and adult treatment services by implementing a recruitment and retention strategy. The recruitment strategy will include online advertising, utilization of placement firms, participation in job fairs/hiring events, improvements to application technology, new hire incentives and referral payments. The retention strategy will include special pay, a recognition program and improvements to cameras and monitoring technology.

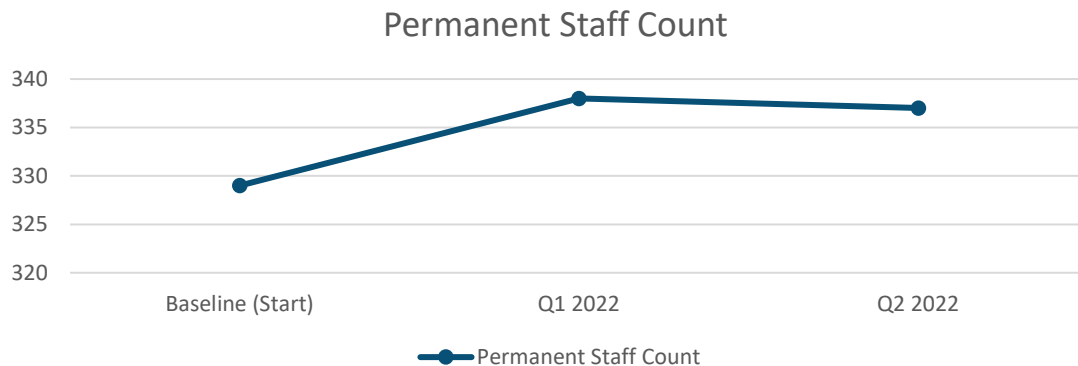
Results: To address the hypothesis/action statement, SalusCare will use data that is gathered both quarterly and annually and compare this data to the staffing base line data to see how funds are impacting the program intent to reduce staffing shortages and increase support for youth and adult treatment services.

Conclusion: SalusCare at the end of the contract term, will compile all data and formulate a conclusion based on the results to the determine how much if any, that funds contributed to reduction of staffing shortages and increased support for youth and adult treatment services.

Performance Measured to Date:

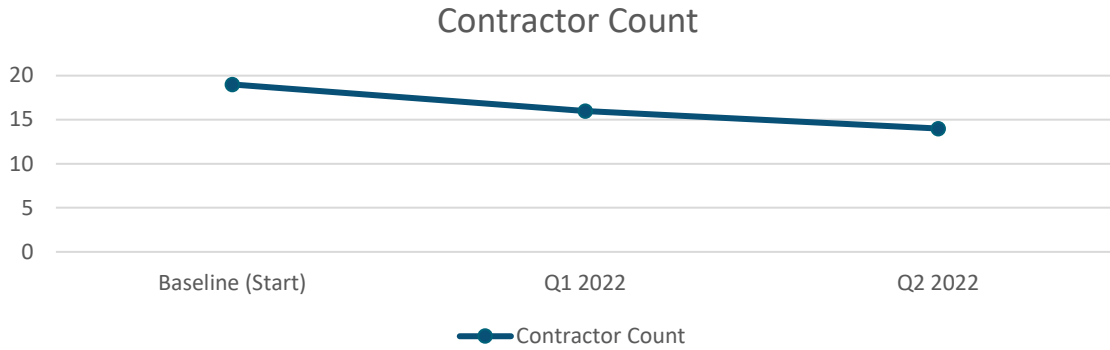
Quarterly Data:

Permanent Staff count



Timeframe	Permanent Staff Count
Baseline (Start)	329
Q1 2022	338
Q2 2022	337

Contractor count



Timeframe	Contractor Count
Baseline (Start)	19
Q1 2022	16
Q2 2022	14

Vacancy count

Timeframe	Vacancy Count
Baseline (Start)	21.46%
Q1 2022	22.38%
Q2 2022	21.47

Average length of vacancies

Timeframe	Length of Vacancy
Baseline (Start)	180
Q1 2022	180
Q2 2022	180

Number of individual adults and youth served by Treatment Service

Timeframe	Adults	Youth
Baseline FY 2020	15,320	4,166
Baseline FY 2021	14,960	4,353
Q1 2022	7,384	2,258
Q2 2022	6,203	1,847

Baker Acts

Timeframe	Adults	Youth
Baseline FY 2020	1,585	582
Baseline FY 2021	1,780	758
Q1 2022	708	348
Q2 2022	514	232

Annual Data to be Measured:

- Bed Capacity
- Turnover Rate (Permanent Staff)
- Employee Feedback
- Community Services for those released from Baker Acts

Additional Baseline Data:

Bed Capacity 2020 and 2021

FY	Bed Capacity
2020	29 adult detox until 3/25/2020 20 adult detox beginning 3/25/2020 16 children’s CSU 30 adult CSU
2021	20 adult detox 16 children’s CSU, reduced to 10 from 4/29/21-6/21/2021; 12/11/2021 – present 30 adult CSU, reduced to 20 from 4/29/21-6/21/2021; 12/11/2021 - present

Turnover Rate for 2020 and 2021. (Permanent Staff)

FY	Turnover Rate
2020	28.50%
2021	30.71%

Performance Outcomes to be Measured:

- Maintain staffing levels that meet the need of the system (reduce turnover)
- Reduce staffing shortages (number of vacancies)
- Increase staff to expand treatment services (Youth/ Adults)
- Reduce the number of Baker Acts (Pediatric and Adult)
- Increase community-based services to those released from Baker Acts
- Maintain 100% bed capacity to meet demand

1.12B Behavioral Health Coordinated Care System

Project ID: ARPA-PH112B, *Pending Project Owner*

Funding Amount: \$5,000,000

Project Duration: TBD

Project Expenditure Category: 1.12 Mental Health Services*^

Project Overview:

More information will be reported when available. Lee County is seeking a lead agency for the development and implementation of a comprehensive system of care for the behavioral health service in Lee County. NOFA was released March 1, 2022 and plans are to have agreements in place by Fall 2022.

Status of Completion: Not Started

Project Demographic Distribution: Information will be reported when available.

Promoting Equitable Outcomes: Information will be reported when available.

Use of Evidence: Information will be reported when available.

Performance: KPIs for this project are in development.

2. Negative Economic Impacts

Assistance to Households

2.01 Food Distribution Organizations to Address Food Insecurity

Project ID: ARPA-BNE021A1, Harry Chapin Food Bank

Funding Amount: \$2,750,000



Harry Chapin Food Bank
OF SOUTHWEST FLORIDA

Project ID: ARPA-BNE021A2, Midwest Food Bank

Funding Amount: \$1,320,000



Midwest
FOOD BANK®

Project ID: ARPA-BNE021A4, The Salvation Army

Funding Amount: \$465,000



Project Duration: December 1, 2021 – December 31, 2024

Project Expenditure Category: 2.1 Household Assistance: Food Programs

Project Overview:

The COVID-19 pandemic and the economic crisis, including unprecedented increases in inflation, directly impacted food distribution programs. The pandemic impacted distribution models and methods, which impacted operating budgets. The economic and health impact of COVID-19 in our area has been enormous. Southwest Florida became an epicenter for the pandemic, with inflation rates that both exceeded other parts of Florida and the national average. The economic impact of the pandemic was the primary driver behind increased food insecurity and demand for food.

Harry Chapin Food Bank of Southwest Florida, Inc., Midwest Food Bank, and the Salvation Army will use the funds to recover from the economic impact their food distribution program(s) suffered during the COVID-19 pandemic. Their program(s) address food insecurity for low income, minority, and other households in Lee County that were impacted by Covid-19. Funds may be used to purchase food, and supplies, as well as to fund operational expenses to continue assisting Lee County residents.

The subaward for these projects was executed through a beneficiary agreement. The payments to the subrecipient will be made on a reimbursement basis. The anticipated and eligible expenses include food distribution, supplies, and operational costs.

Status of Completion: Completed less than 50%

Promoting Equitable Outcomes: These beneficiary organizations will use the funds to cover the negative economic impact their food distribution program(s) suffered during the COVID-19 pandemic. Their program(s) address food insecurity for low income, minority, and other households in Lee County.

2.10 Workforce Training and Certification Grant (Micro and Rapid Credentialing)

Project ID: ARPA-NE210A1, School Board of Lee County (Adult Learning)

Funding Amount: \$750,000

Project Duration: January 1, 2022 – December 31, 2024

Project Expenditure Category: 2.10 Assistance to Unemployed or Underemployed Workers (e.g. job training, subsidized employment, employment supports or incentives)*^

Project Overview:



The Workforce Training and Certification (Micro and Rapid Credentialing) Grants – School Board of Lee County project is a new adult learning program. The project is fully funded through CSLFRF and responds to the COVID-19 exacerbated education disparities and improves opportunities for economic advancement.


Training will be provided in programs that offer soft skills micro-credentialing with each requiring twelve hours of instruction. The offering includes 8 micro-credentials in: Collaboration, Creative Problem-Solving, Critical Thinking, Empathy, Initiative, Intercultural Fluency, Oral Communication and Resilience.

Status of Completion: Completed less than 50%

Project Demographic Distribution: Data will be reported when available.

Promoting Equitable Outcomes: This project will focus on providing training and certifications to participants looking to improve their job prospects or financial security. Additional information will be reported when available.

Website: [Upskill Village Home](#)



Through funding provided by the American Rescue Act Plan, Coronavirus State and Local Fiscal Recovery Fund, Lee County residents may be eligible for tuition costs associated with soft skills micro-credentialing programs in Adult Education at the School District of Lee County. Tuition coverage is dependent on individual assistance eligibility.

Which Soft Skills Micro-Credentials are Being Offered?

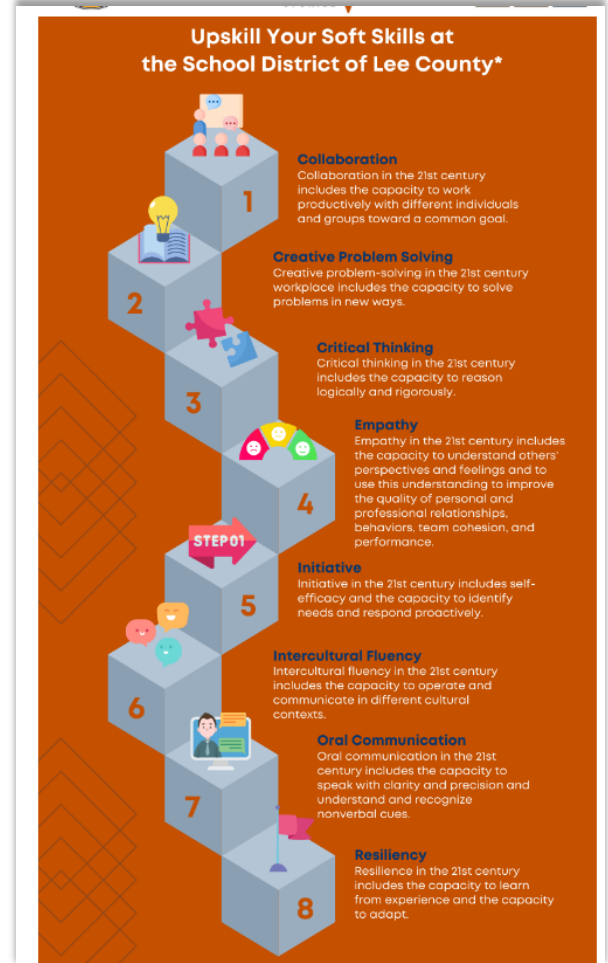
Adult Education at the School District of Lee County is offering a soft skill micro-credential program using Education Design Lab's "21st Century Skills". These 8 micro-credentials are currently being offered by 800 higher education institutions and 125 K-12 school districts.

- Collaboration
- Creative Problem Solving
- Critical Thinking
- Empathy
- Initiative
- Intercultural Fluency
- Oral Communication
- Resiliency

According to Education Design Lab, these 21st century skills micro-credentials are "credentials that signal the completion of a rigorous and intentional learning experience for a core 21st century skill—we sometimes call these power skills, mobility skills, or soft skills—like collaboration, critical thinking, and creative problem-solving." <https://edl.edlab.org/microcredentialing/>

Achieving one or more of these micro-credentials can increase your ability to secure an interview, a new job, or a new opportunity at your current place of employment. Each achieved micro-credential will be issued a digital badge that is shareable and searchable.

Upskill Your Soft Skills at the School District of Lee County*



- 1 Collaboration**
Collaboration in the 21st century includes the capacity to work productively with different individuals and groups toward a common goal.
- 2 Creative Problem Solving**
Creative problem-solving in the 21st century workplace includes the capacity to solve problems in new ways.
- 3 Critical Thinking**
Critical thinking in the 21st century includes the capacity to reason logically and rigorously.
- 4 Empathy**
Empathy in the 21st century includes the capacity to understand others' perspectives and feelings and to use this understanding to improve the quality of personal and professional relationships, behaviors, team cohesion, and performance.
- 5 Initiative**
Initiative in the 21st century includes self-efficacy and the capacity to identify needs and respond proactively.
- 6 Intercultural Fluency**
Intercultural fluency in the 21st century includes the capacity to operate and communicate in different cultural contexts.
- 7 Oral Communication**
Oral communication in the 21st century includes the capacity to speak with clarity and precision and understand and recognize nonverbal cues.
- 8 Resiliency**
Resiliency in the 21st century includes the capacity to learn from experience and the capacity to adapt.

According to Education Design Lab, these 21st century skills micro-credentials are "credentials that signal the completion of a rigorous and intentional learning experience for a core 21st century skill—we sometimes call these power skills, mobility skills, or soft skills—like collaboration, critical thinking, and creative problem-solving." <https://edl.edlab.org/microcredentialing/>

Achieving one or more of these micro-credentials can increase your ability to secure an interview, a new job, or a new opportunity at your current place of employment. Each achieved micro-credential will be issued a digital badge that is shareable and searchable.

When are the Soft Skills Micro-Credentials Being Offered?

The first class begins August 31st

- 20 seats available
- 1:00 PM - 6:00 PM every Wednesday (8/31 - 9/21)
- In person at the Lee County Public Education Center (EAST Entrance) - 2855 Colonial Boulevard, Fort Myers, FL 33966

Pre-registration is required and will be open beginning July 5th

Additional classes will be offered (in-person and Online) beginning in October

How Do I Register for a Soft Skills Micro-Credential Class?

1. Complete the registration form at: [LINK WILL BE ADDED]
2. A team member from Adult Education will contact you with additional details after you register.
 - Adult students must be Lee County residents in order to take the class for free

Do you have additional questions? Please email UpskillVillage@LeeSchools.net.

Use of Evidence: Evidence-producing; learning agenda being finalized.

Performance Measured to Date:

Number of programs available under Workforce Training and Certification Grant (Micro and Rapid Credentialing)	Number of students applying for program/class tuition	Number of students receiving program/class tuition	Tuition amount and total participants awarded by program
8	<i>Starting August 31, 2022</i>	<i>Starting August 31, 2022</i>	<i>Starting August 31, 2022</i>

ARPA Measure: Number of Workers Enrolled in Sectoral Job Training Programs	ARPA Measure: Number of Workers Completing Sectoral Job Training Programs
TBD	TBD

Performance Outcomes to be Measured:

- Participants completing course by program.
- Participants who improve their jobs or increased financial security.

Project ID: ARPA-NE210A2, Florida Gulf Coast University (FGCU) Board of Trustees

Funding Amount: \$1,000,000

Project Duration: January 1, 2022 – December 31, 2024

Project Expenditure Category: 2.10 Assistance to Unemployed or Underemployed Workers (e.g. job training, subsidized employment, employment supports or incentives)*^

Project Overview:



The Workforce Training and Certification (Micro and Rapid Credentialing) Grants - Florida Gulf Coast University (FGCU) project is a new public university program. The project is fully funded through CSLFRF and responds to the COVID-19 exacerbated education disparities and improves opportunities for economic advancement.

The major activities include recruiting and job training assistance in-demand career opportunities. Training will be provided in programs that offer micro and rapid credentialing and digital badges including IBM Skills Academy (information technology literacy), Senior Care and case management, emergency preparedness and management (first-responder, healthcare, and social support), medical device fundamentals, professional sales, digital marketing, and professional construction management.

Status of Completion: Completed less than 50%

Project Demographic Distribution: Data will be reported when available.

Promoting Equitable Outcomes: This project will focus on providing training and certifications to participants living in Lee County, especially underserved communities, looking to improve their job prospects or financial security.

Website: [Funding for Lee County Residents \(fgcu.edu\)](https://fgcu.edu); Social Media

Florida Gulf Coast University

Passion Led Us Here

2022 | [Home](#) | [About Us](#) | [Admissions](#) | [Academics](#) | [Administrative & Aid](#) | [Student Life](#) | [Community](#) | [Resources](#) | [Alumni](#)

Career-Readiness Programs for Lee County Residents

FGCU strives to make education more affordable for our community members who live and work in Lee County. We are happy to announce that the Lee County Economic Development Office is funding select Micro-credentials/Digital Badges for residents of Lee County.

- 15 Acceptable Programs
- 787K Lee County Residents
- 1 Valid Lee County ID
- Vast Opportunities

Explore "The Power of And" at FGCU:
Enhance your resume AND...

APPLY TODAY!
MUST PROVIDE A LEE COUNTY ADDRESS ON VALID ID

Continuing Education & Skills Academy Micro-credentials/Digital Badges:

Micro-credentials/Badges provided through FGCU Continuing Education & Skills Academy focus on upskilling and reskilling for professionals and students. Our micro-credentials/digital badges increase workers' readiness to fill key industry roles, and build candidates' confidence and job market success by making their skills visible to employers.

- IBM Skills Academy:** Students and professionals within the community may enhance their technical knowledge, skills, and abilities to remain current and earn a digital badge issued by IBM.
- Turf Grass Management:** Individuals will learn about various aspects of turf grass from management to horticulture. Professionals will have the opportunity to sit for the examination to qualify for the Florida Pesticide Application license.
- Construction Management:** This course is geared to those who are looking to advance their knowledge and understanding of the basic elements and skill sets required by a Professional Construction Manager.
- Coming Soon: Senior Care Partner:** Learn how to assess a client's needs and to develop a care plan using critical services, community-based services, and technology.

APPLY TODAY!
MUST PROVIDE A LEE COUNTY ADDRESS ON VALID ID

Industry-specific Micro-credentials/Digital Badges:

The micro-credentials/digital badges below, created in partnership with leading industry partners, support student development of in-demand skills and competencies. These skill micro-credentials/digital badges are incorporated into existing academic courses within FGCU colleges and schools.

- Fundamentals of Medical Device Industry:** Students are taken out of the classroom and connected directly to the health industry through a partnership FGCU has with Anveo.
- Essentials of Professional Sales:** Gain insight and build upon Professional Selling material, while better preparing for excellence in an entry-level professional selling position.
- Coming Soon: Emergency Preparedness and Management:** Learn the competencies and skills desired for emerging professionals in first-responder, healthcare, and social support roles.

APPLY TODAY!
MUST PROVIDE A LEE COUNTY ADDRESS ON VALID ID

Facebook Feed: Florida Gulf Coast University Sponsored. Lee County - IBM Certification for Free. Advance Your Career. Register To Earn Your Artificial Intelligence Digital Badge. Lee County - Free IBM Technical. Get a C Edge at.

Instagram Feed: fgcu Sponsored. IBM SKILLS ACADEMY at Florida Gulf Coast University. BLOCK CHAIN. From frictionless supply chains to food we can trust, learn how industries are revolutionizing businesses with blockchain technology. Sign up. fgcu Get IBM Certification - FREE. Advance Your Career With Free IBM Digital Badges.

Facebook Feed: Florida Gulf Coast University Sponsored. Earn a Certificate as a Technology Professional. FREE COURSES. Build Your Career Credentials. Sign up.

Instagram Feed: fgcu Sponsored. Earn a Certificate as a Technology Professional. FREE COURSES. GET A COMPETITIVE EDGE AND ADVANCE YOUR CAREER. REGISTER TODAY. Sign up.

Use of Evidence: Evidence-producing; learning agenda being finalized.

Performance Measured to Date:

Number of programs available under Workforce Training and Certification Grant (Micro and Rapid Credentialing)	Number of students applying for program/class tuition	Number of students receiving program/class tuition	Tuition amount and total participants awarded by program
30	84 (112 duplicated head count)	TBD	TBD

ARPA Measure: Number of Workers Enrolled in Sectoral Job Training Programs	ARPA Measure: Number of Workers Completing Sectoral Job Training Programs
TBD	TBD

Performance Outcomes to be Measured:

- Participants completing course by program.
- Participants who improve their jobs or improve financial security.

Project ID: ARPA-NE210A3, Florida Southwestern State College

Funding Amount: \$1,000,000

Project Duration: January 1, 2022 – December 31, 2024

Project Expenditure Category: 2.10 Assistance to Unemployed or Underemployed Workers (e.g. job training, subsidized employment, employment supports or incentives)*^

Project Overview:



The Workforce Training and Certification Grant (Micro and Rapid Credentialing) will provide student grants for in-demand career training programs through Florida Southwestern State College (FSW). This project is a new public university program that is fully funded through CSLFRF. The project responds to the negative economic impacts of the public health emergency by assisting individuals who want to work and are available for work, including those who are unemployed, have looked for work sometime in the past 12 months, who are employed part-time but who want and are available for full-time work, or who are employed but seeking a position with greater opportunities for economic advancement.

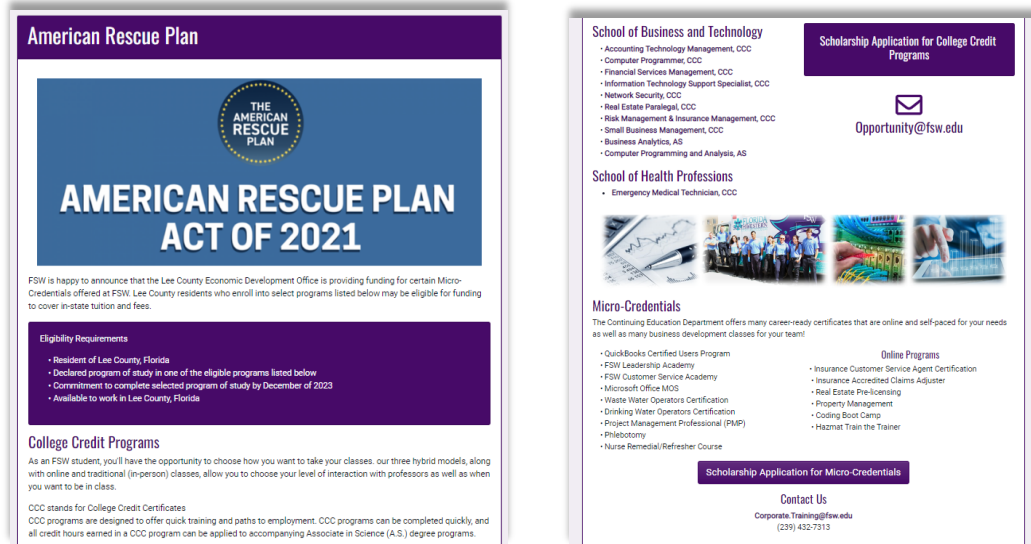
The project's major activities include providing outreach and recruitment of potential trainees, assessing their training needs, and providing tuition-free training classes that lead to certification in in-demand careers.

Status of Completion: Completed less than 50%

Project Demographic Distribution: Data will be reported when available.

Promoting Equitable Outcomes: This project will focus on providing training and certifications to participants living in Lee County, especially underserved communities, looking to improve their job prospects or financial security. The course programs included were selected to meet the needs of Lee County employers and employees in need of reskilling and upskilling.

Website: [American Rescue Plan \(fsw.edu\)](https://www.fsw.edu)



Use of Evidence: Evidence-producing; learning agenda being finalized.

Performance Measured to Date:

Number of programs available under Workforce Training and Certification Grant (Micro and Rapid Credentialing)	Number of students applying for program/class tuition	Number of students receiving program/class tuition	Tuition amount and total participants awarded by program
14	32	28	TBD

ARPA Measure: Number of Workers Enrolled in Sectoral Job Training Programs TBD	ARPA Measure: Number of Workers Completing Sectoral Job Training Programs TBD
---	--

Performance Outcomes to be Measured:

Participants completing course by program
Participants who improve their jobs or financial security.

Project ID: ARPA-NE210A4, Hodges University

Funding Amount: \$250,000

Project Duration: January 1, 2022 – December 31, 2024

Project Expenditure Category: 2.10 Assistance to Unemployed or Underemployed Workers (e.g., job training, subsidized employment, employment supports or incentives)*^

Project Overview:



The Workforce Training and Certification (Micro and Rapid Credentialing) Grants – Hodges University project is a new public university program. The project is fully funded through CSLFRF and responds to the COVID-19 exacerbated education disparities and improves opportunities for economic advancement.

The project will offer eligible adult learners the opportunity for paid tuition for the eligible classes. Hodges will manage the requests for tuition by participants, approval of the funding (based on budget availability), and the payments for the participants classes. The major activities include in-demand career training opportunities for Emergency Medical Technicians and Dental Assisting.

Status of Completion: Completed less than 50%

Project Demographic Distribution: Data will be reported when available.

Promoting Equitable Outcomes: This project will focus on providing training and certifications to participants living in Lee County, especially underserved communities, looking to improve their job prospects or financial security.

Use of Evidence: Evidence-producing; learning agenda being finalized.

Performance Measured to Date:

Number of programs available under Workforce Training and Certification Grant (Micro and Rapid Credentialing)	Number of students applying for program/class tuition	Number of students receiving program/class tuition	Tuition amount and total participants awarded by program
2	TBD	<i>Starting August 2022</i>	<i>Starting August 2022</i>

ARPA Measure: Number of Workers Enrolled in Sectoral Job Training Programs	ARPA Measure: Number of Workers Completing Sectoral Job Training Programs
TBD	TBD

Performance Outcomes to be Measured:

Participants completing course by program
Participants who improve their job or financial security.

2.11 Support Non-Profit Childcare Providers to Increase Capacity

Project ID: ARPA-NE211A, Early Learning Coalition of Southwest Florida

Funding Amount: \$3,000,000

Project Duration: January 1, 2022 – December 31, 2024

Project Expenditure Category: 2.11 Healthy Childhood Environments: Child Care*^

Project Overview:



The Support Childcare Providers to Increase Capacity project is an existing service of Early Learning Coalition of Southwest Florida (ELC) which Lee County Human Services partially fund. Through the project, ELC will recruit childcare providers to participate in a capacity-building and learning-focused initiative to create new or expand and enhance existing school readiness services.

The project activities include a pilot grant program based on needs assessments of participating childcare provided. Grant will be provided to fund capacity building, technical assistance, and other eligible resources. The program will be evaluated to identify and implement opportunities for improvement. Additional grant cycles will be run with a similar learning agenda to continue refining the program and building a body of knowledge regarding supporting childcare providers to increase capacity.

Additional activities include project administration, technical assistance, training, grants awards for equipment, Gold Seal accreditation, business training, early learning professional's certification, and equipment purchases.

Status of Completion: Completed less than 50%

Project Demographic Distribution: Data will be reported when available.

Promoting Equitable Outcomes: ELC has created a Notice of Solicitation of Applications for the Lee County School Readiness Capacity Building Grant. Criteria being considered on the application include: provider has a current School Readiness (SR) contract for upcoming school year, the location of provider high-need areas as defined by the Florida Index of Child Care Access (FLICCA 4.1) interactive map, the percent of SR program children current served by the provider, good standing and years contracted with SR, in good standing with Dept of Children and Families (no class 1 violations in the last year), poverty of zip code, services provided to a Qualified Census Tract (QCT), CLASS score, Gold Seal status, and potential increase in slots count.

Use of Evidence:

Type of program: Evidence-Producing

Learning Agenda - Hypothesis/Action Statement: Lee County families need access to high quality childcare. The Early Learning Coalition of SWFL will award eligible childcare providers grant funds for capacity building needs, supplies, business training and technology training. The grants will help to assist providers to expand capacity and will be focused on building a high-quality infrastructure where childcare providers have stronger business practices and demonstrate higher quality competencies (i.e., Gold Seal Accreditation and increased CLASS Scores). Strategies for recruitment and retention will be a part of the

infrastructure improvement plan for each provider. The infusion of resources will create greater childcare capacity in high-quality programs.

Performance to be Measured: Project pilot scheduled to begin in July 2022.

Measures:

- Number of childcare providers assisted by project
- Number of childcare seats added by providers
- Number of childcare seats added in high-need areas
- Number of childcare providers participating in professional development
- Turnaround time for families who receive School Readiness funding (greater availability)
- ARPA required measure: Number of children served by childcare and early learning (Pre-school/Pre-K, ages 3-5)

Baseline for project participating providers:

- Number of current seats and availability
- Current CLASS scores and accreditation
- Length of time on waiting list

Performance Outcomes to be Measured:

- Increased availability of childcare
- School Readiness families have options for childcare when they are called from ELC waiting list and can enroll their child(ren) immediately.
- School Readiness providers are high quality as evidenced by increased CLASS scores and accreditation (Gold Seal)

2.15 Affordable Housing Grants to Nonprofits

Project ID: ARPA-NE215A, Southwest Florida Affordable Housing Choice Foundation, Inc.

Funding Amount: \$5,000,000

Project Duration: July 1, 2022 – September 30, 2024

Project Expenditure Category: 2.15 Long-term Housing Security: Affordable Housing*^

Project Overview:

Southwest Florida Affordable Housing Choice Foundation, Inc. created the Greater Dunbar Initiative built around Housing, Neighborhood, and People strategies consisting of four phases. For Housing and Neighborhood strategies, Southward Village within the Dunbar community and an off-site parcel (Cleveland Avenue) will be redeveloped into affordable, high-quality, safe, sustainable, well-managed mixed-income, mixed-use, multi-generational communities totaling 462 housing units. All housing is supported with new infrastructure and complemented with amenities (clubhouse, fitness room, business center, etc.). The neighborhood will also include a large central park with retention pond. The People strategies will work to meet resident needs and facilitate education and employment. Strategies include comprehensive case management, enhancing access to healthcare providers, structured use of amenities to facilitate healthy lifestyles, connections to proven workforce

development programs, and extensive series of educational programs supporting children. This funding award will focus on Phase 2 of this overall project outline. Activities for Phase 2 include (a) beginning on the northern side of the Southward Village site, there will be multifamily townhomes and garden apartments totaling to 145 units; and (b) a 7,500 sq. ft. community center and central park stormwater retention pond will be constructed during this phase.

Status of Completion: Not Started

Project Demographic Distribution: Data will be reported when available.

Promoting Equitable Outcomes: Focus is on providing long-term affordable housing units for an underserved community.

Use of Evidence: Plan will be reported when available.

Performance to be Measured:

- Project status as a % complete.
- Number of units that are completed and approved for occupancy.
- Number of units occupied by beneficiaries meeting the eligibility criteria.
- Projected/actual construction start date
- Projected/actual initiation of operations date (month/year)
- Location
- Davis Bacon certification
- Did the project prioritize local hires
- Did the project have a Community Benefit Agreement
- Number of affordable housing units preserved or developed

Performance Outcome to be Measured: Goal = 145 redeveloped units of affordable housing available.

Project ID: ARPA-NE215B, Habitat for Humanity of Lee and Hendry County, Inc.

Funding Amount: \$2,500,000

Project Duration: July 1, 2022 – September 30, 2024

Project Expenditure Category: 2.15 Long-term Housing Security: Affordable Housing*^

Project Overview:



Habit for Humanity of Lee and Hendry County, Inc. will be utilizing ARPA funds to address the issue of affordable housing in Lee County that has both predated and been exacerbated by the Covid-19 crisis with many low-income families disproportionately affected. The main activities of this project will be to utilize the McNeil parcel, a 10.34-acre neighborhood, Habitat for Humanity of Lee and Hendry County, Inc. will develop the infrastructure of which 36 lots to construct single-family affordable homes for families making between 30-80% of area median income will be created.

Status of Completion: Not Started

Project Demographic Distribution: Data will be reported when available.

Promoting Equitable Outcomes: Focus is on providing long-term affordable housing units for an underserved community.

Use of Evidence: Plan will be reported when available.

Performance to be Measured:

- Project status as a % complete.
- Number of lots where project infrastructure development site work has commenced.
- Number of lots where project infrastructure development site work is complete.
- Number of lots ready for housing construction.
- Projected/actual construction start date
- Projected/actual initiation of operations date (month/year)
- Location
- Davis Bacon certification
- Did the project prioritize local hires
- Did the project have a Community Benefit Agreement
- Number of affordable housing units preserved or developed

Performance Outcome to be Measured:

Goal = Complete infrastructure development site work for all 36 lots within the subdivision.

2.16 Increase Street Outreach and Case Worker Staff to Address Housing Stability Needs

Project ID: ARPA-NE216A, Human and Veteran Services positions (3)

Funding Amount: \$800,000

Project Duration: January 1, 2022 – December 31, 2022

Project Expenditure Category: 2.16 Long-term Housing Security: Services for Unhoused Persons*^

Project Overview:



The Lee County Human and Veteran Services Increase Street Outreach and Case Worker Staff to Address Housing Stability Needs project is an enhancement to an existing government service that SLFRF fully funds. The project seeks to aid the homeless and eligible individuals seeking permanent housing to locate, obtain and maintain permanent housing.

The major activities of the project include hiring three outreach coordinators to engage with persons experiencing homelessness and connect them to housing and supportive services.

Status of Completion: Completed less than 50%

Project Demographic Distribution:

Gender		
Male	Female	Total
9	21	30

Ages				
Under 18	18-35	36-55	55+	Total
11	13	4	2	30

Race			
White	Black or African American	More than one race	Total
3	22	5	30

Ethnicity		
Hispanic or Latino	Non-Hispanic or Non-Latino	Total
7	23	30

Income Level			
Extremely low income households	Very low income households	Low income households	Total
8	4	3	30

Promoting Equitable Outcomes (Highlights):

- Focus is on providing outreach and coordinated support to persons experiencing homelessness. Outreach staff engage persons who are experiencing unsheltered homelessness in encampments, parks, and on the street throughout Lee County. Upon first engagement outreach assesses the client’s immediate needs, including shelter, food, clothing, and hygiene items. Once the client’s immediate condition stabilized, outreach staff completed a standardized assessment tool to assess any potential barriers to housing. The client is then prioritized for housing and connected to supportive services that will assist them to obtain and maintain stable, permanent housing.
- Outreach staff advise clients of where they can seek the supportive services needed to achieve success toward their goals. Outreach staff make warm handoff referrals for a variety of services, including, but not limited to: voc rehab, mental health services, substance use treatment services, career source, physical health care, and free prescription assistance.
- Staff have received motivational interviewing, mental health first aid, and trauma informed care training. To ensure that persons with limited English proficiency can access services in their own language, HVS has contracted with Martti, an on-demand translation service that provides interpreter services in a variety of languages. Additional training related to diversity, equity, and inclusion and providing culturally sensitive services is being planned during 2023.

Use of Evidence:

Housing First model which maintains that individuals should be housed first and connected to all services after being housed.

[Housing First | County Health Rankings & Roadmaps](#)

Evidence Rating = Scientifically Supported.

Strong evidence that Housing First programs reduce homelessness, increase housing stability, and reduce hospital utilization.

Performance Measures to Date:

Individuals Served	Households Served
15	30

Households Referred to a Housing Program	Households Referred to a Temporary Shelter
3	3

Project ID: ARPA-NE216B1, Catholic Charities Diocese of Venice

Funding Amount: \$478,993

Project Duration: January 1, 2022 – December 31, 2022

Project Expenditure Category: 2.16 Long-term Housing Security: Services for Unhoused Persons*^

Project Overview:



Catholic Charities Diocese of Venice (CCDOV) housing program is an existing intensive case management program partially funded by Lee County Government. The program helps clients secure permanent housing by increasing their income and developing or identifying community or governmental support systems.

The project's major activities include the addition of staff – two SOAR (SSI/SSDI Outreach, Access, and Recovery) caseworkers to help clients navigate government benefit programs. In addition, funds will help clients pay for the documentation required to obtain SSI/SSDI and identification. Funds will also help provide mental health counseling services through the outpatient mental health program and telehealth.

Status of Completion: Completed less than 50%

Project Demographic Distribution:

Ages				
Under 18	Ages 18-30	31-65	65+	Total
		2		2

Race						
White	Black or African American	American Indian or Alaska Native	Asian	Native Hawaiian or Other Pacific Islander	Other Race	Total
1	1					2

Ethnicity		
Hispanic or Latino	Not Hispanic or Latino	Total
1	1	2

Household Size				
1	2	3	3+	Total
2				2

Special Needs		
Yes	No	Total
2	0	2

Promoting Equitable Outcomes (Highlights):

- As a supportive service program, we have received referrals directly from Rapid Rehousing (RRH). This way, new renters can obtain assistance for a stable income through benefits from the Social Security Administration. Unfortunately, the homeless population lacks resources to work on these types of processes. Our program not only provides the assistance with an application, but the responsibility of receiving mail, faxes, and emails from different agencies to ensure a better outcome of the application.
- The Supportive Services Program addresses and prioritizes racial equity issues since the expected economic benefits will disproportionately impact African American and Hispanic residents of Lee County. Benefits will also impact disabled people of all races, who also have historically had lower than average incomes. We expect at least 60% of clients served through the proposed Supportive Services Program will be African American, Hispanic or people with disabilities.
- CC DOV' s staff is highly diverse, and representative of the community served. Over half of CCDOV staff is either African American or Hispanic. Almost all staff is bilingual in Spanish additional staff are bilingual in Haitian Creole, Mayan dialects, Ukrainian and Russian.
- The leadership and staff represent a diversity of backgrounds and many have themselves faced discrimination, poverty, and hardships. They have a deep empathy with the clients they are serving and serve all with dignity and respect.

- All services are offered free of charge.

Use of Evidence:

Evidence-based: Housing First Model; Rapid Rehousing; Critical Time Intervention (CTI), SOAR (SSI/SSDI outreach, access, and recovery) trained case managers.

Housing First model which maintains that individuals should be housed first and connected to all services after being housed.

[Housing First | County Health Rankings & Roadmaps](#)

Evidence Rating = Scientifically Supported.

Strong evidence that Housing First programs reduce homelessness, increase housing stability, and reduce hospital utilization.

Performance Measured to Date:

Case Management	Service referrals by case manager
2	0

Performance Outcomes to be Measured:

- Length of time persons remain homeless
 - Target: < 30 days
- Extent to which persons who exit homelessness to permanent housing destinations return to homelessness
 - Targets:
 - Less than 10% of households should return to homelessness within 6 months after program exit
 - Less than 10% of households should return to homelessness within 12 months after program exit
 - Less than 30% of households should return to homelessness within 24 months after program exit
 - At least 85% of clients will have a program exit to permanent housing
- Job and income growth
 - Targets:
 - 45% of clients will increase their income

Project ID: ARPA-NE216B2, Affordable Homeownership Foundation Inc.

Funding Amount: \$163,362

Project Duration: January 1, 2022 – December 31, 2022

Project Expenditure Category: 2.16 Long-term Housing Security: Services for Unhoused Persons*^

Project Overview:



Affordable Homeownership Foundation, Inc.
Solving the Puzzle of Homeownership

The Affordable Homeownership Foundation—Increase Street Outreach and Case Worker Staff to Address Housing Stability Needs project is a community nonprofit's existing program to prevent homelessness. The program will be partially funded through ARPA. The program will use a HUD-established triage process to identify and work with clients to remove barriers that increase the risk of becoming homeless.

The project's major activities include assigning case managers to recruit and negotiate terms with landlords that will allow clients who are at risk of losing their housing to make changes that conform to the landlord's requirements.

Program case managers will work with clients to review their income, budgets, credit, and other circumstances to discover and resolve the reasons landlords often discontinue leases. The program will offer a "good renter" class that teaches clients how to communicate with the landlords, especially during difficulties that may jeopardize their housing. The project will also provide referrals to job retention training.

Status of Completion: Completed less than 50%

Project Demographic Distribution:

Age			
18-35	36-55	55+	Total
33	25	34	92

Race				
Asian	Black or African American	Native Hawaiian or Other Pacific Islander	White	Total
1	30	3	58	92

Ethnicity		
Hispanic or Latino	Not Hispanic or Latino	Total
23	69	92

Special Needs		
Yes	No	Total
14	78	92

Promoting Equitable Outcomes (Highlights):

- The program is designed and tailored to those populations that are the most vulnerable 30, 50 to 80% of AMI.
- We place a racial equity lens on solutions for equitable outcomes, such as source-of-income protections, equitable land use decisions, property tax law and eviction prevention.
- Engage each client and record their feedback during the whole process from intake to re-housing. When we start working with clients that are homeless, we ask the question "What caused you to become homeless?" Using documentation of past evictions and what caused those issues we can develop a record of the previous barriers to housing and how that can be addressed so it does not happen again.
- National Low Income Housing Coalition, that we are a member of, has a map of the areas in our county that show the highest rate of evictions and the areas that need the most help with preventing eviction and foreclosure so we would target our outreach campaigns to the local churches and community groups in those areas to be able start helping individuals outlined in their reports.
- Each of our impact areas, such as areas of high eviction and racial inequality our programs move us toward our goal of advancing racial equity by listening to and working together with our residents, employees, and partners, we are investing in the systemic changes we want to see in our country.
- All our housing is available to individuals and families that are homeless and have been homeless previously. We remove the stigma from homelessness treating every client the same but insuring they are referred to the proper resources to help them become rehoused.

Use of Evidence:

Housing First model which maintains that individuals should be housed first and connected to all services after being housed.

[Housing First | County Health Rankings & Roadmaps](#)

Evidence Rating = Scientifically Supported.

Strong evidence that Housing First programs reduce homelessness, increase housing stability, and reduce hospital utilization.

Performance Measured to Date:

Clients Enrolled in the Program Who Obtained Housing	Case Management
10	92

Performance Outcomes to be Measured:

- Length of time persons remain homeless
 - Target: 30-90 days between project enrollment and placement into permanent housing
- Extent to which persons who exit homelessness to permanent housing destinations return to homelessness
 - Targets:
 - 75% of clients will remain housed after 6 months
 - 80% of clients will remain housed after 12 months
 - 85% of clients will remain housed after 24 months
- Number of persons who are no longer homeless
 - Target: 110 persons will be housed
- Job and income growth
 - Targets:
 - 90% of clients will increase their income
 - 85% of clients will increase their unearned income
 - 90% of clients will maintain their earned or unearned income

Project ID: ARPA-NE216B3, Community Assisted and Supportive Living Inc.

Funding Amount: \$357,645

Project Duration: January 1, 2022 – December 31, 2022

Project Expenditure Category: 2.16 Long-term Housing Security: Services for Unhoused Persons*^

Project Overview:



Community Assisted and Supported Living Increase Street Outreach and Case Worker Staff to Address Housing Stability Needs project is an existing, partially ARPA-funded service of a community nonprofit.

The project will provide case management to help clients meet goals, resolve challenges, remove barriers and obstacles, and access outside resources. Additionally, assistance will be provided to improve literacy skills, job/volunteer search skills, accessing government benefits, budgeting skills, healthcare access, transportation, community services, crisis intervention, finding clothing resources, computer skills, nutrition, social skills, hygiene management, security management, safety management and housekeeping skills.

The major activities of the project include adding two case management staff, a peer specialist and fund a portion of a case management supervisor position to deliver the program enhancement. to serve clients residing within Lee County. There will be a total of 3.6 FTEs funded. Additionally, the program will provide case management to coordinate the services to assist clients in obtaining the program goals.

Status of Completion: Completed less than 50%

Project Demographic Distribution:

Age			
18-35	36-55	55+	Total
8	13	25	46

Race			
American Indian or Alaskan Native	Black or African American	White	Total
1	9	36	46

Ethnicity		
Hispanic or Latino	Not Hispanic or Latino	Total
6	40	46

Special Needs		
Yes	No	Total
2	44	46

Promoting Equitable Outcomes (*Highlights*):

- The target population for this project is individuals with disabling conditions that are referred to CASL by the continuum of care (CoC) due to the individual’s homelessness. This is a requirement to ensure we are working with disproportionately affected populations.
- All our programs have been developed and are designed to reduce barriers for housing entry and ensure racial equity among the clients we serve.
- Our case managers take the individuals needs into account, incorporating systems with accurate tracking of outcomes, and focus on underserved statistical areas, often due to the disparate impacts of mental illness, substance abuse, and other special needs for individuals within our community.
- In recent years CASL has placed a focus on hiring Peer Support Specialists, persons with lived experience and who are individuals who are in recovery from substance use or co-occurring mental health disorders.
- We continue to provide training to our staff to successfully navigate everyone’s personal and cultural background to provide the supports they require to reach economic and social equity.
- CASL’s primary population is individuals with disabling conditions, conditions that impair their ability to carry out basic Activities of Daily Living.
- The project is marketed to individuals coming through the Lee County Continuum of Care. These individuals rank high on the VI-SPDAT assessment as being persons who historically have been underserved. Additionally, CASL provides outreach through our service programs to assist individuals in accessing the CoC resources.

- Our organization specifically targets the disparities in access to mainstream benefits by our clients. We understand that different populations and racial groups often have differing experiences when it comes to receiving federal funding.
- CASL provides housing to its CoC clients who are persons with a disabling condition without placing pre-conditions or eligibility requirements, beyond HUD's eligibility requirements, in line with Housing First. CASL offers and encourages participation in supportive service activities, but there is not a time limit or requirement for participation.

Use of Evidence:

CASL is a provider of Permanent Supportive Housing, a strong evidence-based practice recognized by both SAMHSA and HUD defined as permanent housing in which housing assistance (e.g., long-term leasing or rental assistance) and supportive services are provided to assist households with at least one member (adult or child) with a disability in achieving housing stability.

CASL is designated as a Projects for Assistance in Transition from Homelessness (PATH) provider organization; Housing First evidence-based model; Functional Assessment Rating Scale (FARs) Assessments; Case Management; Peer Support; and Trauma Informed Care.

Housing First model which maintains that individuals should be housed first and connected to all services after being housed.

[Housing First | County Health Rankings & Roadmaps](#)

Evidence Rating = Scientifically Supported.

Strong evidence that Housing First programs reduce homelessness, increase housing stability, and reduce hospital utilization.

Performance Measured to Date:

Clients Enrolled in the Program Who Obtained Housing	Case Management	Service Referrals/Transportation to Partner Providers
19	799	108

Performance Outcomes to be Measured:

- Length of time persons remain homeless
 - Target: < 30 days
- Extent to which persons who exit homelessness to permanent housing destinations return to homelessness
 - Targets:
 - Less than 10% of households should return to homelessness within 6 months after program exit
 - Less than 10% of households should return to homelessness within 12 months after program exit

- Less than 30% of households should return to homelessness within 24 months after program exit
- At least 85% of clients will have a program exist to permanent housing
- Number of persons who are no longer homeless
 - Target: 50 persons will be housed
- Job and income growth
 - Target: At least 45% of households should increase their income upon program exit

2.25 Support Non-Profit, Extended Learning and After-School Programs that Address Educational Disparities

Project ID: ARPA-NE225A, Big Brothers Big Sisters of the Sun Coast, Inc.

Funding Amount: \$227,413

Project Duration: June 1, 2022 – December 31, 2024

Project Expenditure Category: 2.25 Addressing Educational Disparities: Academic, Social, and Emotional Services*^

Project Overview:



The Big Brothers Big Sisters of the Sun Coast, Extended Learning and After-School Project is an existing program that will contract with Lee County to build capacity and expand its services in Lee

County through the Agency's One to One Mentoring Program. This One-to-One Mentoring Program project will serve local youth through afterschool and summer programming that addresses educational disparities by providing the informed advocacy, guidance, support, resources, referrals, and tools needed to overcome economic and racial barriers and achieve academic, career, and life success. The service results positive outcomes that help at-risk youth remain in school and make academic progress, avoid risky behaviors, overcome barriers to academic success, graduate high school, and achieve higher education. The major activities for this project include (a) mentors assisting students with their homework and studying, and they facilitate reading activities that support the emergence of a love of reading and an improvement in reading proficiency; and (b) developing a friendship based on trust and continuous support and guidance, mentors also address other key risk factors, such as poor academic performance and risky behaviors.

Status of Completion: Not Started

Project Demographic Distribution: Data will be reported when available.

Promoting Equitable Outcomes (*Highlights*):

- All youth served by BBBSSC face Diversity, Equity, Inclusion (DEI) and Access barriers-economic, racial, ethnic, LGBTQ, language, disability, educational, ACES, etc. BBBSSC has committed through its DEI Task Force to identify its challenge areas to clients achieving DEI and Access, and to develop

and actualize a plan for clients to overcome DEi and Access barriers and forge a pathway to the self-sufficient, productive lives they deserve.

- BBBSSC is committed to creating and cultivating a safe environment where all individuals feel respected and valued equally, utilizing a nondiscriminatory and anti-racist approach, and dismantling any inequities within its policies, systems, programs, and services.
- To meet the Agency's DEi strategic goals and help clients achieve equity, through this expansion project, BBBSSC will engage in ongoing expert-led, fully customized DEi Leadership Development training sessions and workshops for staff, board members, and mentors.
- BBBSSC is laser-focused on recruiting racially/ethnically diverse volunteers, training on trauma-informed care, child safety, socio-emotional needs, and growing as an agency in the areas of DEi and Access.
- The One-to-One Mentoring Program promotes educational success as the best path to close equity gaps, overcome equity barriers, and achieve a productive and financially secure life. In so doing, all One-to-One Mentoring Program services closely and fully adhere to the Big Brothers Big Sisters of America national organization's requirements and longstanding evidence-based model.
- Mentor Managers contact the mentor, youth, youth's parent/guardian, and/or relevant school personnel at least monthly to provide support, assess progress, and help overcome any obstacles to outcome achievement.
- Many mentees have learning disabilities that hindered their educational progress prior to connecting with BBBSSC. Mentors and Mentor Managers regularly attend teacher and IEP (Individualized Education Plan) meetings and advocate for clients' needs. Mentor Managers measure progress and the success of the youth client in meeting expected academic outcomes by utilizing the Youth Outcome Development Plan and academic grade and progress reports.

Use of Evidence:

Evidence-based: Big Brothers Big Sisters' One to One Mentoring Program is an evidence based program is found here: <https://search.issuelab.org/resource/making-a-difference-in-schools-the-big-brothers-big-sisters-school-based-mentoring-impact-study.html>

Performance to be Measured:

- ARPA Measure: Number of students participating in evidence-based tutoring programs.
 - Report quarterly participation
 - Report the cumulative participation number annually
 - Number of students served goal annually = 300
- Number of participating students that achieved timely grade level promotion or high school graduation.
 - Report cumulative achievement number annually (end of school year)

Performance Outcome to be Measured: At least 85% of the at-risk K-12th grade youth served will achieve timely grade level promotion or high school graduation. Report achievement/ participants annually (end of school year)

Project ID: ARPA-NE225B, Boys and Girls Club of Lee County

Funding Amount: \$260,000

Project Duration: June 1, 2022 – December 31, 2024

Project Expenditure Category: 2.25 Addressing Educational Disparities: Academic, Social, and Emotional Services*^

Project Overview:



The Boys and Girls Club of Lee County, Extended Learning and After-School Project is an existing program that will contract with Lee County to provide high-quality after-school and summer programs, serving kids ages 6-18, designed to build skills and knowledge in the areas of education, health and wellness, sports & recreation, the arts, workforce development, and service & leadership. The project has targeted two Title 1 school locations (Varsity Lakes Middle and James Stephens Elementary) to expand our program, that are in need of afterschool and summer services in their area. The service results positive outcomes with members on track to achieve academic success, demonstrate good character & citizenship and live a healthy lifestyle. The major activities for this project include (a) focus on building skills in core subjects, through reading and STEM programs; and (b) providing mentors to guide youth through social and emotional development.

Status of Completion: Not Started

Project Demographic Distribution: Data will be reported when available.

Promoting Equitable Outcomes (*Highlights*):

- Our mission and core beliefs drive our commitment to promoting safe, positive, and inclusive environments for all. BGCLC supports all youth and teens - of every race, ethnicity, gender, gender expression, sexual orientation, ability, socio-economic status, and religion - in reaching their full potential.
- We are committed to the overall emotional, cognitive, and social well-being of our youth. Our goal is to provide safer childhoods, life-enhancing programs, and caring mentors, who coach and guide children who need us the most.
- Our core programs are designed to assist with bridging the educational gap that exists between low-income youth in underserved areas, and their moderate and upper- income peers.
- We do not turn any child away if they are unable to pay, which is why we provide scholarships to low-income families who otherwise cannot afford to attend. Additionally, we address food insecurities by offering each child a hot meal or snack daily through our partnership with the Lee County School District and local food banks.
- Our program is important to the families of working and single parents. By providing a safe place for kids afterschool, parents can work and/ or seek employment to provide for their families.

- Our intended outcomes are focused on closing the gap so that all children, no matter their circumstances, achieving positive outcomes in our three priority areas of Academic Success, Good Character and Citizenship, and Healthy Lifestyles.

Use of Evidence (Highlights):

Research based programs.

Project Learn. Academic Support; Homework Help; Tutoring; Academic Enrichment; Remedial Education.

Research Basis. Citation: Clark, Reginald. (2002) *Building Student Achievement: In-School and Out-of-School Factors*. Policy Issues, North Central Regional Educational Laboratory, Issue 13.

Research results. Citation: Schinke, Steven, et al. (2000) *Enhancing the Educational Achievement of At-Risk Youth*. Prevention Science, Volume 1, No. 1.

Summer Brain Gain. Academic Enrichment; Literacy; Math Education.

Research Basis.

Web Link: <https://www.metisassociates.com/case-studies/closing-opportunity-and-achievement-gaps-through-out-of-school-time-programs/>

Multiple-year evaluation of Summer Brain Gain is currently underway, using a study design that includes rigorously matched control groups.

Research Results. Citation: Unpublished; evaluation is underway.

Triple Play. Physical Fitness; Nutrition Education; Recreational Activities.

Research Results. Citation: Gambone, Michelle, et al. (2009) *Promoting Healthy Lifestyles: The Impact of Triple Play on Healthy Eating, Exercise Patterns, and Developmental Outcomes*. Youth Development Strategies, Inc.

SMART Leaders. Drug and violence prevention

Research Results. Citation: St. Pierre, Tena L., D. Lynne Kaltreider, Melvin M. Mark, and Kathryn J. Aikin. (1992) *Drug Prevention in a Community Setting: A Longitudinal Study of the Relative Effectiveness of a 3-Year Primary Prevention Program in Boys & Girls Clubs Across the Nation*. American Journal of Community Psychology, Vol. 20, Issue 6.

Passport to Manhood. Character Education

Research Basis. Citation: McLean, K., et al. (2010) Constructing the Self in Early, Middle and Late Adolescent Boys: Narrative Identity, Individuation, and We/I-Being. Journal of Research on Adolescence, Vol. 20.

Performance to be Measured:

- ARPA Measure: Number of students participating in evidence-based tutoring programs.
- Number of participants in the program.
 - Report quarterly.
 - Report culminative number annually.
- Number of students participating in at least 30 minutes of physical fitness activity.

- Report quarterly participation.
- Number of participating students that achieved a 2.0 "C" average or higher.
 - Report # of students with above 2.0 "C" average quarterly.
 - Report cumulative achievement number annually (end of school year)

Performance Outcomes to be Measured:

- 85% of youth who participate in at least 30 minutes of physical fitness activity will increase their physical fitness skills.
 - Report Base-line information about student physical fitness skills.
 - Report physical fitness improvement annually.
- 85% of measured students will achieve a 2.0 "C" average or higher.
 - Report base-line information about student grade average.
 - Report Achievement of clients annually.

Project ID: ARPA-NE225C, The Heights Center

Funding Amount: \$407,891

Project Duration: June 1, 2022 – December 31, 2024

Project Expenditure Category: 2.25 Addressing Educational Disparities: Academic, Social, and Emotional Services*^

Project Overview:



The Heights Center, Extended Learning and After-School Project is an existing program that will contract with Lee County to provide high-quality after-school and summer programs, serving kids in kindergarten -eighth grade, designed to provide of remedial and enrichment activities. The project has one location primarily serving the needs of the Harlem Heights community. The service results positive outcomes improved grades in reading/language arts/math; increases in grade levels equivalencies for independent reading passages; improved fluency rates and comprehension skills; improved accuracy in basic mathematical operations and math problem solving. The major activities for this project include (a) schoolwork assistance; (b) specialized programming in in the areas of fitness, science, art, character development, and technology multiple times each month; and (c) special clubs in such areas as music, art, coding, scientific inventions, and sports.

Status of Completion: Not Started

Project Demographic Distribution: Data will be reported when available.

Promoting Equitable Outcomes (*Highlights*):

- Supporting School Success is designed specifically for the Harlem Heights Census Designated Area, and therefore is targeted toward providing experiences and opportunities to traditionally disenfranchised populations to address economic and racial inequities.

- The Harlem Heights neighborhood, with a population of 2087 individuals, is a severely distressed community, with families living in poverty at a rate that is significantly higher than the rest of Lee County.
- The neighborhood is characterized by a high percentage of single parent families (70.3%), families in which English is not spoken at home (72.8%), and limited engagement of residents in formal education.
- Approximately 857 children and youth live in a mixture of single-family homes and multi-family apartments. Demographically, the population is approximately 81% Hispanic, 8% African American, and 11% Caucasian. With 37.7% of the children here below the federal poverty line, this neighborhood has a higher rate of childhood poverty than 80.9% of U.S. neighborhoods.
- The focus of Supporting School Success is on closing the achievement gaps typical to populations living in extreme poverty, and/or for whom English is not their home language.
- Strategies unique to the learning needs of children in these populations form the basis of the tutoring, remediation, acceleration, and enrichment activities experienced by participants. As a result, participants can make academic gains.
- To achieve more equitable outcomes for participants, Supporting School Success helps participants develop the academic skills needed for school success, as well as assisting participants in the growth of their communication, teamwork, problem solving and decision-making skills.

Use of Evidence (*Highlights*):

Peer Tutoring and Response Groups. Peer Tutoring and Response Groups works to improve the language and achievement of English Language Learners. The US Department of Education Institute of Education Sciences What Works Clearinghouse reviewed the research evidence and reports studies meeting WWC research design standards. [WWC | Peer Tutoring and Response Groups \(ed.gov\)](#)

Instructional Conversations and Literature Logs. The goal of Instructional Conversations and Literature Logs is to help English Language Learners develop reading comprehension along with English language proficiency. The US Department of Education Institute of Education Sciences What Works Clearinghouse reviewed the research evidence and reports studies meeting WWC research design standards. [WWC | Instructional Conversations and Literature Logs \(ed.gov\)](#)

Leveled Literacy Intervention. Leveled Literacy Instruction is a short-term, supplementary, small-group literacy intervention designed to help struggling readers achieve grade-level competency. The instructional approach allows teachers to match students with texts of progressing difficulty and deliver systematic lessons targeted to a student's reading ability. The US Department of Education Institute of Education Sciences What Works Clearinghouse reviewed the research evidence and reports studies meeting WWC research design standards. [WWC | Leveled Literacy Intervention](#)

PATHS (Promoting Alternative Thinking Strategies). The PATHS Curriculum is a comprehensive program for promoting emotional and social competencies and reducing aggression and behavior problems in preschool through 8th grade students while simultaneously enhancing the educational process. Program effectiveness evaluated through research reviews: Blueprints Model Program, CASEL (Collaborative for Academic, Social and Emotional Learning), Helping America's Youth Registry (Promising Program), OJJDP (Office of Juvenile Justice and Delinquency

Prevention) (Exemplary Program), and USDE's Safe, Disciplined and Drug Free Schools (Promising Program)

Performance to be Measured:

- ARPA Measure: Number of students participating in evidence-based tutoring programs.
 - Report quarterly participation.
 - Report the cumulative participation number annually.
- Number of participating students that show an increase in 21st century skills (communication, teamwork, social skills etc.).
 - Report quarterly improvement.
 - Report # of students with skill level increase annually.
- Number of students that show increase in skill level in reading, language arts, math, or science.
 - Report quarterly improvement.
 - Report# of students with skill level increase annually.

Performance Outcomes to be Measured:

- 75% of youth who complete the program will show an increase in 21st century skills such as communication, teamwork, social skills, self-confidence, and analytical thinking.
 - Report base line student skill level in 21st century skills.
 - Report rate of youth achievement annually.
- 70% of youth who complete the program will increase their skill level in reading, language arts, math, or science.
 - Report base line student skill level in subject areas.
 - Report rate of youth achievement annually.

Project ID: ARPA-NE225D, New Horizons of Southwest Florida

Funding Amount: \$213,786

Project Duration: June 1, 2022 – December 31, 2024

Project Expenditure Category: 2.25 Addressing Educational Disparities: Academic, Social, and Emotional Services*^

Project Overview:



New Horizons of SWFL provides high-quality mentoring and school tutoring to kids in grades K-12. The Extended Learning and After-School Project will contract with Lee County to fund a professional development program for organization leaders and to update technology for staff and students. The students served by New Horizons are from low-income households which the primary language spoken is not English and they are struggling academically at the time of enrollment. The service results positive outcomes to improve each

child's well-being academically, socially, emotionally, and physically. The major activities for this project

include three professional development training programs for club-level and department leaders (a) Learning Differently & Teaching Better: Master Strategies for Improving Outcomes for Disadvantaged Students & Families; (b) Master Teacher Professional Development; and (c) Senior Leadership Training.

Status of Completion: Not Started

Project Demographic Distribution: Data will be reported when available.

Promoting Equitable Outcomes (*Highlights*):

- In the training "Learning Differently & Teaching Better: Master Strategies for Improving Outcomes for Disadvantaged Students & Families," 1 program staff will learn how to better serve students with a focus on four major vulnerable subgroups in K-12 education. The scope of the training series will focus on best practices in instruction and relationship building where it concerns:
 1. Students from major racial and ethnic groups (Hispanic & Haitian in southwest Florida)
 2. Economically disadvantaged students (Free and reduced lunch)
 3. Children with disabilities (Exceptional Student Education 1ESE1 & 504 plans)
 4. English learners (native and foreign-born ELL/ESL/ESOL/LEP)
- At the Super Kids and Teens Clubs, volunteers who come from diverse backgrounds build relationships with students by providing a safe space during their study sessions, which allows students to share about themselves and facilitates mentoring opportunities.
- The dropout rate for under-resourced students is higher than the general student population. New Horizons focuses on several academic outcomes intended to keep students on track to graduate from high school.
- New Horizons' overall objective is to close the learning gap for under-resourced students by providing tutoring, mentoring and character-building opportunities.

Use of Evidence:

New Horizons follows an evidence-based model to effective tutoring as reported by the U.S. DOE ("Evidence that Tutoring Works, 2001) that includes: coordination of materials with the classroom, training of tutors and frequent structured tutoring sessions. This, along with our delivery model of small group instruction and computer-based instruction, allows us to address the educational disparities that exist in the population we serve. New Horizons trains tutors who then receive ongoing support from the staff. Tutoring sessions are well-structured and are held four days per week. The student to tutor ratio is low, generally 1:2 for elementary and 1:6 for middle/high school.

New Horizons focuses on the five essential components of reading as defined by the National Reading Panel: phonemic awareness, phonics, fluency, vocabulary development and reading comprehension. Research Citation: Scammacca, Vaughn, Roberts, Wanzek, Torgensen "Extensive Reading Interventions in Grades 1-3," FCRR, 2007.

The computerized academic component of the New Horizons of SWFL model uses the IXL online curriculum for our students to achieve measurable outcomes in their reading, language arts, and even some math skills. IXL also gives our staff real time analytics to know where to go and how to help each student. Research Citation: Carlson, D., Borman, G.D., & Robinson, M. (2011). A multistate district-level

cluster randomized trial of the impact of data-driven reform on reading and mathematics achievement. Educational Evaluation and Policy Analysis, 33, 378-398.

Performance to be Measured:

- ARPA Measure: Number of students participating in evidence-based tutoring programs.
- Number of students participating in the program.
 - Report Quarterly Participation.
 - Report Culminative Participation. Annually.
- Number of students that graduate from high school with a plan to work or attend college
 - Report annually the number of students that graduate with the intent to enter the workforce or attend college
- Number of students that have increased their skill level in reading, language arts, math, or science
 - Report quarterly # of students improved.
 - Report # of students improved (end of program)
- Number of students that have improved their soft skills (communication, critical thinking, life skills)
 - Report Quarterly # of students improved.
 - Report # of students improved (end of program)

Performance Outcomes to be Measured:

- 55% of students enrolled in the program will graduate from high school with a plan to work or attend college.
 - Report graduation rates / rates of those entering workforce or attending college (end of school year)
- 70% of youth who complete the program will increase their skill level in reading, language arts, math, or science.
 - Report quarterly improvement rate.
 - Report Annually percent of clients with skill increase.
- 80% of clients who complete the program will be able to improve soft skills (communication, critical thinking, life skills).
 - Report quarterly improvement rate.
 - Report Annually percent of clients with skill increase.

Project ID: ARPA-NE225E, YMCA of SWFL

Funding Amount: \$ 490,910

Project Duration: June 1, 2022 – December 31, 2024

Project Expenditure Category: 2.25 Addressing Educational Disparities: Academic, Social, and Emotional Services*^

Project Overview:



YMCA OF SOUTHWEST FLORIDA

The YMCA of SWFL will enhance and expand afterschool and summer programs in four targeted communities within Lee County to reduce educational disparities among elementary and middle school youth (ages five to 14). Y Youth Services (YYS) will enhance educational programming with Power Scholars, an evidence-based reading and math program with proven results. The youth served by the YMCA come from 36 schools and half of those schools are Title I. The service results positive outcomes to improve each child's well-being academically, socially, emotionally, and physically. The major activities for this project include (a) homework assistance (including the BellXcel Power Scholars program); (b) character development; (c) physical activities; and (d) indoor activities with music and art

Status of Completion: Not Started

Project Demographic Distribution: Data will be reported when available.

Promoting Equitable Outcomes (Highlights):

- YMCA of Southwest Florida's "Y Youth Success" (YYS) is an afterschool and summer youth development program that has intentionally been designed to reach children, youth, and families from economically and racially/ethnically diverse communities in Lee County with evidence-based educational components to mitigate learning disparities.
- YYS has been structured to provide services to children, youth and their families who are attending racially and ethnically diverse elementary and middle school as well as a selection of Title I schools to ensure children and youth from all backgrounds and communities can participate in high-quality experiences.
- The YYS program is focused on closing educational gaps for all struggling students in the program with an emphasis of reaching low-to-moderate income families and/or families of color.

Use of Evidence (Highlights):

- BellXcel Power Scholars Evidence Base.
 - Research Citation: <https://www.bellxcel.org/education-research-and-insights/>
- Afterschool Programming Evidence Base
 - Research Citation: Neild, R.C., Wilson, S.J., & McClanahan, W. (2019). Afterschool programs: A review of evidence under the Every Student Succeeds Act. Philadelphia: Research for Action.
<https://www.researchforaction.org/projects/afterschoolessa/>
- Summer Learning Loss and Benefits of Summer Learning Evidence Base
 - [Summer learning loss: What is it, and what can we do about it? \(brookings.edu\)](https://www.brookings.edu/research/summer-learning-loss-what-is-it-and-what-can-we-do-about-it/)
 - Research Citation: Atteberry, Allison, and Andrew McEachin. (2019). School's Out: The Role of Summers in Understanding Achievement Disparities.
 - [Every Summer Counts: A Longitudinal Analysis of Outcomes from the National Summer Learning Project \(wallacefoundation.org\)](https://www.wallacefoundation.org/summertime/summertime-counts-a-longitudinal-analysis-of-outcomes-from-the-national-summer-learning-project)

Performance to be Measured:

- ARPA Measure: Number of students participating in evidence-based tutoring programs.
- Number of students participating in after-school programming.
 - Report quarterly participation.
 - Report the cumulative participation number annually.
 - Number of Students Served Goal Annually = 340
- Number of students participating in summer programming.
 - Report quarterly participation.
 - Report the cumulative participation number annually.
 - Number of Students Served Goal Annually = 555

Performance Outcomes to be Measured:

- The number of students participating in evidence-based tutoring programs
 - Maintain the goals set above for both after-school and summer programming. (Report annually)

Assistance to Small Businesses

2.29 Small Business Resiliency Assistance

Project ID: ARPA-NE229A

Funding Amount: \$4,000,000

Project Duration: July 1, 2022 – December 31, 2024

Project Expenditure Category: 2.29 Loans or Grants to Mitigate Financial Hardship^

Project Overview

Small Business Resiliency Assistance Grants will help to respond to the negative economic impacts on small businesses and will help them keep their businesses open, protect local jobs, support community recovery, and increase the resiliency of local businesses. The project beneficiaries will be small businesses and charitable nonprofits primary in QCT and low to moderate income designated areas. The program requires applicants to have received technical assistance from at least one of the ARPA-funded Small Business Technical Assistance Subrecipients and to be referred to Lee County Economic Development for a Small Business Resiliency Assistance grant application.

Status of Completion: Completed less than 50%

Project Demographic Distribution: Data will be reported when available.

Promoting Equitable Outcomes: This project focuses on providing grant assistance to businesses within QCTs and low to moderate income designated areas.

Use of Evidence: This section is not applicable to this project per Treasury Reporting Guidance.

Performance to be Measured:

Number of Small Businesses Applying for Resiliency Grant	Number of Small Businesses Approved for Resiliency Grant	Grants awarded to Businesses (disaggregate by type, other)
6	2	2

ARPA Measure: Number of Small Businesses Served
2

Performance Outcome to be Measured: Increased economic viability of small business that had been negatively impacted by the COVID-19 public health emergency.

2.30 Small Business Technical Assistance

Project ID: ARPA-NE230A1, FGCU Board of Trustees on behalf of the Florida Small Business Development Center (SBDC)

Funding Amount: \$250,000

Project Duration: January 1, 2022 – December 31, 2023

Project Expenditure Category: 2.30 Technical Assistance, Counseling, or Business Planning*^

Project Overview:



The Florida Small Business Development Center, Technical Assistance Project is an existing program that will contract with Lee County to extend its services to small businesses disproportionately affected by COVID-19 by providing technical assistance, counseling, or other business planning services. This project will target businesses in Qualified Census Tracts and in Low-Moderate income designated areas who were impacted by COVID-19 facing financial insecurity, substantial declines in gross receipts, those with less capacity to weather financial hardship, those with less access to credit. The service results in a business assessment to provide individualized and group training in business planning and improvement. The major activities for this project include (a) Triage and Business Needs Assessment; (b) Training; (c) Business Research; (d) Growth Acceleration; (e) International Trade; (f) Government Contracting; (i) Business Continuation; (j) Capital Access Planning; and (k) Organizational Development.

Status of Completion: Completed less than 50%

Project Demographic Distribution:

Business Organization Type	
Sole Proprietorship	2
Partnership	
Corporation	8

S Corporation	3
LLC	10
Not Set	1

Race (Owner)							
American Indian or Alaska Native	Asian	Black or African American	Native Hawaiian or Other Pacific Islander	White	Other Race	Not Provided	Total
0	0	16	0	7	0	1	24

Ethnicity (Owner)			
Hispanic or Latino	Not Hispanic or Latino	No Reply	Total
7	17	0	24

Gender (Owner)			
Female	Male	No Reply	Total
17	7	0	24

Disability (Owner)			
No	Yes	No Reply	Total
21	2	1	24

Promoting Equitable Outcomes: This project focuses on providing assistance to businesses within QCTs and low to moderate income designated areas.

Website and Social Media Samples:

ARPA PROGRAM

ARE YOU ELIGIBLE FOR THE ARPA GRANT?

SMALL BUSINESS RESILIENCY GRANT PROGRAM IS NOW OPEN

Lee County has allocated \$4 million for the Small Business Resiliency Grant program to help small businesses and charitable nonprofits offset COVID-19 pandemic-related costs and improve business resiliency. This program is designed to help small businesses keep their doors open, protect local jobs threatened by the COVID-19 pandemic, support community recovery, and increase the resiliency of local businesses in our community. Funds for this program are part of the American Rescue Plan Act (ARPA), Coronavirus State, and Local Fiscal Recovery Funds (CSLFRF) allocated to Lee County.

WHAT DO YOU GET OUT OF THIS PROGRAM?

IF YOU'RE ELIGIBLE, COMPLETE THE FORM TO CONNECT WITH A CONSULTANT. YOU'LL RECEIVE A CHECKLIST TO COMPLETE THE APPLICATION!



Email (required)

First Name

Last Name


ARPA GRANT APPLICATION DOCUMENTATION CHECKLIST

THANK YOU FOR YOUR INTEREST!

A BUSINESS CONSULTANT WILL BE REACHING OUT TO YOU TO SCHEDULE AN APPOINTMENT.

ARPA GRANT APPLICATION DOCUMENTATION CHECKLIST

[DOWNLOAD HERE](#)



HAS YOUR BUSINESS BEEN IMPACTED BY COVID-19?

You might qualify for the Small Business Resiliency Grant

visit www.fsbdcswfl.org/arpa-program & complete the form



SMALL BUSINESS RESILIENCY GRANT

[CHECK ELIGIBILITY](#)

www.fsbdcswfl.org/arpa-program



DO YOU QUALIFY?

The Small Business Resiliency Grant program helps small businesses and charitable nonprofits offset COVID-19 pandemic-related costs.

www.fsbdcswfl.org/arpa-program

[CONTACT US TODAY](#)



Struggling to keep your business operating?

You might qualify for the Small Business Resiliency Grant!

www.fsbdcswfl.org/arpa-program



Do you qualify for the Small Business Resiliency Grant?

ARPA PROGRAM

ARE YOU ELIGIBLE FOR THE ARPA GRANT?

SMALL BUSINESS RESILIENCY GRANT PROGRAM IS NOW OPEN

Use of Evidence: Information will be reported when available.

Performance Measured to Date:

Number of Small Businesses Applying for Technical Assistance	Number of Sessions with Clients	Total Hours Spent with Clients
24	34	62

ARPA Measure: Number of Small Businesses Served
24

Business Type	Client Count
Construction	2
Retail Trade	1
Transportation and Warehousing	1
Professional, Scientific, Technical Services	5
Administrative Support	4
Educational Services	1
Health Care and Social Assistance	3
Other	5
Public Administration	1
Not set	1
TOTAL	24

Number of Small Businesses Recommended for Project Funding through the Lee County Resiliency Grant
4

Performance Outcome to be Measured: Increased economic viability of small business that had been negatively impacted by the COVID-19 public health emergency.

Project ID: ARPA-NE230A2, Service Corps of Retired Executives (SCORE)

Funding Amount: \$25,000

Project Duration: January 1, 2022 – December 31, 2024

Project Expenditure Category: 2.30 Technical Assistance, Counseling, or Business Planning*^

Project Overview:



SCORE’s Technical Assistance Project is an existing program that will contract with Lee County to extend its services to small businesses disproportionately affected by COVID-19 by providing technical assistance, counseling, or other business planning services. This project will target businesses in Qualified Census Tracts and in Low-Moderate income designated areas who were impacted by COVID-19 facing financial insecurity, substantial declines in gross receipts, those with less capacity to weather financial hardship, those with less access to credit. The service results in a business assessment and will provide templates and tools to assist small businesses with formalizing their business planning and operations. The major activities for this project include (a) Small Business Mentoring; (b) Business Resource Library; (c) Small Business Development Classes and Workshops including Strategy & Planning, Business Plans/Startup Assistance, Legal Issues, Non-Profit, Buying or Selling a Business, Marketing, Public Relations & Sales, Accounting & Cash Flow and Financing/Capital.

Status of Completion: Completed less than 50%

Project Demographic Distribution: Data will be reported when available.

Promoting Equitable Outcomes: This project focuses on providing assistance to businesses within QCTs and low to moderate income designated areas.

Use of Evidence: Evidence Producing - Information will be reported when available.

Performance to be Measured:

Number of Small Businesses Applying for Technical Assistance	Number of Small Businesses Recommended for Project Funding through the Lee County Resiliency Grant	Services Awarded to Businesses (disaggregate by type, other)
1	1	0

ARPA Measure: Number of Small Businesses Served
1

Performance Outcome to be Measured: Increased economic viability of small business that had been negatively impacted by the COVID-19 public health emergency.

Project ID: ARPA-NE230A3, SWFL Impact Partners

Funding Amount: \$100,000

Project Duration: January 1, 2022 – December 31, 2023

Project Expenditure Category: 2.30 Technical Assistance, Counseling, or Business Planning*^

Project Overview:



The SW Florida Impact Partners LLP, Technical Assistance Project, is an existing program that will contract with Lee County to extend its services to small businesses disproportionately affected by COVID-19 by providing technical assistance, counseling, or other business planning services. This project will target businesses in Qualified Census Tracts and in Low-Moderate income designated areas who were impacted by COVID-19 facing financial insecurity, substantial declines in gross receipts, those with less capacity to weather financial hardship, those with less access to credit.

The service will help to identify opportunities to a network of investors, developers, and neighborhood leaders, and identify business opportunities in opportunity zones and CRAs. The major activities for this project will (a) Provide subject matter expertise on business recovery options and act as the conduit between businesses and all local, State, and Federal programs available; (b) Provide consulting for businesses impacted by COVID-19 in targeted areas and consult on topics to accelerate a sustainable to resilient recovery; (c) Perform outreach to businesses in QCT zones and Low to Moderate Income specified areas, to learn of their ongoing needs, provide support, and refer them to available resources; and (d) Assist in the development of a small business recovery tool kit/curriculum.

Status of Completion: Completed less than 50%

Project Demographic Distribution: Data will be reported when available.

Promoting Equitable Outcomes: This project focuses on providing assistance to businesses within QCTs and low to moderate income designated areas.

Use of Evidence: Evidence Producing - Information will be reported when available.

Performance to be Measured:

Number of Small Businesses Applying for Technical Assistance	Number of Small Businesses Recommended for Project Funding through the Lee County Resiliency Grant	Services Awarded to Businesses (disaggregate by type, other)
11	0	0

ARPA Measure: Number of Small Businesses Served
11

SW FL Impact Partners held a community engagement open house event. There were 239 certified MBE/DBE were invited and 30+ attended the event.

Performance Outcome to be Measured: Increased economic viability of small business that had been negatively impacted by the COVID-19 public health emergency.

Project ID: ARPA-NE230A4, Goodwill Industries of SWFL

Funding Amount: \$50,000

Project Duration: January 1, 2022 – December 31, 2023

Project Expenditure Category: 2.30 Technical Assistance, Counseling, or Business Planning*^

Project Overview:



The Goodwill Industries of SWFL MicroEnterprise program technical assistance project is an existing program that will contract with Lee County to extend its services to small businesses and nonprofits disproportionately affected by COVID-19. The project will help low-to-moderate-income and disadvantaged individuals start or stabilize their businesses. Services include business classes with feasibility planning, cash flow, and financial access. Participants are assigned a small business mentor who helps participants with business planning and coaching.

The major activities for this project include business counseling, mentoring, and referrals for 1. Small Business Development Classes 2. Small Business Mentoring 3. Business Planning Coaching 4. Small Business Loan Options 5. Potential Access to small business loan and matching funds. Additionally, the funds will cover professional fees, supplies, marketing for the program, and travel.

Status of Completion: Completed less than 50%

Project Demographic Distribution: Data will be reported when available.

Promoting Equitable Outcomes: The project focuses on providing assistance to businesses within QCTs and low to moderate income designated areas.

Evidence Producing - Information will be reported when available.

Performance to be Measured:

Number of Small Businesses Applying for Technical Assistance	Number of Small Businesses Recommended for Project Funding through the Lee County Resiliency Grant	Services Awarded to Businesses (disaggregate by type, other)
25	3	0

ARPA Measure: Number of Small Businesses Served
25

Performance Outcome to be Measured: Increased economic viability of small business that had been negatively impacted by the COVID-19 public health emergency.

Project ID: ARPA-NE230A5, SW Regional Manufacturers Association

Funding Amount: \$50,000

Project Duration: January 1, 2022 – December 31, 2024

Project Expenditure Category: 2.30 Technical Assistance, Counseling, or Business Planning*^

Project Overview:



The Southwest Regional Manufacturers Association (SRMA), Technical Assistance Project, is an existing program that will contract with Lee County to extend its services to manufacturers disproportionately affected by COVID-19 by providing technical assistance, counseling, or other business planning services. This project will target businesses in Qualified Census Tracts and in Low-Moderate income designated areas who were impacted by COVID-19

facing financial insecurity, substantial declines in gross receipts, those with less capacity to weather financial hardship, those with less access to credit. The service provides direct resources such as industry networking, local and state advocacy, and local business connections who can assist manufacturing companies impacted by COVID-19 to stabilize and recover. In addition, it provides outside resources of various types, including consulting, training, supply chain network, apprenticeships, and statewide connections to the same group and purpose. The major activities for this project will (a) Perform outreach to disadvantaged manufacturing businesses to learn of their ongoing needs, provide support, and refer them to available resources; (b) act as the conduit between manufacturing businesses and all local, State, and Federal programs available; (c) provide general business counseling by providing guidance through the program for the individual manufacturing business; (d) connect outside solution providers to manufacturers who can provide one-on-one consulting for businesses impacted by COVID-19 and provide solutions to accelerate a sustainable and resilient recovery; and (e) facilitate in-person and online training events speaking on key topics essential to accelerate business resilience and recovery.

Status of Completion: Completed less than 50%

Project Demographic Distribution: Data will be reported when available.

Promoting Equitable Outcomes: These projects focus on providing assistance to businesses within QCTs and low to moderate income designated areas.

Use of Evidence: Information will be reported when available.

Performance Measured to Date:

Number of Small Businesses Applying for Technical Assistance	Number of Small Businesses Recommended for Project Funding through the Lee County Resiliency Grant	Services Awarded to Businesses (disaggregate by type, other)
1	TBD	TBD

ARPA Measure: Number of Small Businesses Served
1

Performance Outcome to be Measured: Increased economic viability of small business that had been negatively impacted by the COVID-19 public health emergency.

Assistance to Nonprofits

2.34 Nonprofit Human Services Grant and Capacity Building

Project ID: ARPA-NE234A, Human Services Grant Program, United Way

Funding Amount: \$ 17,000,000

Project Duration: November 1, 2021 – June 30, 2025

Project Expenditure Category: 2.34 Assistance to Impacted Nonprofit Organizations (Impacted or Disproportionately Impacted)^

Project Overview:



United Way
of Lee County

The United Way Lee County Nonprofit Human Services Grant project is a new ARPA-funded initiative. The project will provide grants to Lee County human services nonprofits to fund direct services and operational enhancements that

will sustain temporary emergency assistance, supportive services, community engagement, and build resiliency.

The major activities include the administration of the grant program by United Way. The grant program includes a Notice of Funding Available (NOFA) issuance, grant proposal review and preparation to be handed off for evaluation by committees. The evaluation committees will recommend community appropriate project to the Board of Commissioner for review and approval. Subaward agreements will be developed between United Way, as pass-through, and the nonprofits with approved proposals. United Way will distribute funds and monitor their subrecipients.

Status of Completion: Completed less than 50%

Project Demographic Distribution: Data will be reported when available under each subaward.

Promoting Equitable Outcomes: Details will be reported when available under each subaward.

Use of Evidence: This section is not applicable to this project but will be reported with applicable subawards.

Performance Measured to Date:

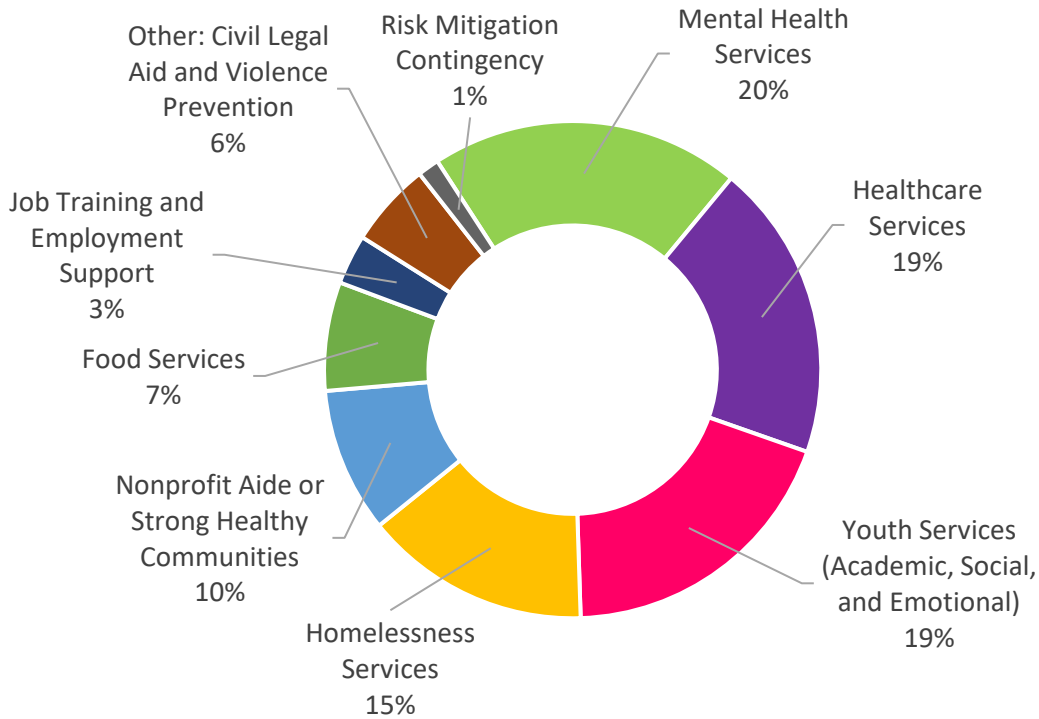
Number of Eligible Organizations Applying for Project Funding and Amount Requested	Number of Organizations Awarded Project Funding and Amount Awarded
74 \$78,085,000	62 organization; 67 projects \$15,975,000

ARPA Measure: Number of Nonprofits Served
62

Categories of direct services awarded project funding and amount awarded.

Project Category	Recommended Awards
Mental Health Services	\$3,269,000
Healthcare Services	\$3,136,000
Youth Services (Academic, Social, and Emotional)	\$3,097,000
Homelessness Services	\$2,385,000
Nonprofit Aide or Strong Healthy Communities	\$1,527,000
Food Services	\$1,146,000
Job Training and Employment Support	\$525,000
Other: Civil Legal Aid and Violence Prevention	\$890,000
Risk Mitigation Contingency	\$226,000

Project Funding Breakdown



Performance Outcome to be Measured: Increase in services available to community

Project ID: ARPA-NE234B, Untied Way Recovery Grant Project, United Way

Funding Amount: \$ 3,000,000

Project Duration: November 1, 2021 – December 31, 2026

Project Expenditure Category: 2.34 Assistance to Impacted Nonprofit Organizations (Impacted or Disproportionately Impacted)^

Project Overview



**United Way
of Lee County**

The United Way Recovery Grant Project is an ARPA funded enhancement of United Way’s existing services. The project will implement strategies to improve business efficiencies, train and develop staff, and integration technologies to

improve communication, data management, and data security.

Major activity includes the addition of an Operations Administrator to formalize and oversee health and safety protocols, security, and maintenance of three service facilities, two warehouses, and 15 United Way Houses. Key staff will receive operations specific training to provide more effective leadership and organizational efficiencies. Funds will be used for salaries of 15 staff in various service areas. Fund will also be used to pay for rental space, utilities, and VOIP technology. Funds will be used to purchase equipment that will improve inventory management. The outcome to the enhancements includes formalizing and documenting operational processes, policies, and procedures that facilitate direct service delivery.

Status of Completion: Completed less than 50%

Project Demographic Distribution: N/A for this project

Promoting Equitable Outcomes: Details will be reported when available.

Performance: KPIs for this project are in development and future reports will be updated to include them.

Aid to Impacted Industries

2.35 Aid to Tourism, Travel, or Hospitality

Project ID: ARPA-NE235A, Digital Infrastructure Recovery Program for Tourism Businesses Experiencing Negative Economic Impact

Funding Amount: \$350,000

Project Duration: April 1, 2022 – December 31, 2024

Project Expenditure Category: 2.35 Aid to Tourism, Travel, or Hospitality^

Project Overview

The Digital Infrastructure Recovery Program is a new, fully ARPA funded, government service of Lee County Visitor & Convention Bureau (VCB) to provide a digital destination optimization program. The project is aimed at understanding and measurably improving the completeness, depth, and quality of information available to consumers about Lee County’s individual tourism related businesses, through

online platforms like Google, Yelp, TripAdvisor, etc. The main activities include providing provide training and technical assistance to local businesses, with actionable “how-tos” and best practices, for up to 90 businesses through hands-on assistance and a series of virtual workshops.

Status of Completion: Completed less than 50%

Project Demographic Distribution: N/A for this project

Promoting Equitable Outcomes: Details will be reported when available.

Performance to be Measured:

Number of Businesses Enrolled/Completing the Program	Percentage of Businesses with Complete Profiles Before/After the Program	Measurable Increase in Intent to Visit Businesses Versus Prior to Optimization
61	TBD	TBD

Project ID: ARPA-NE235B, Tourism Industry Partner Video/Photography Asset Subsidy to Assist with Small Business Economic Recovery

Funding Amount: \$500,000

Project Duration: TBD

Project Expenditure Category: 2.35 Aid to Tourism, Travel, or Hospitality^

Project Overview:

The Tourism Industry Partner Video/Photography Asset Subsidy will provide help for Lee County small businesses to respond to the negative economic impacts of the pandemic, including aid to impacted industries such as tourism, travel, and hospitality. The project will provide video/photography asset grants of up to \$5,000 for approximately 100 local tourism businesses. The grant will be paid to the applicant after submitting proof of invoice and product from photo/video service provider. This project will assist tourism industry businesses in need of updated and refreshed photo and video assets to better position themselves marketing to prospective visitors and residents.

Status of Completion: Not Started

Project Demographic Distribution: N/A for this project

Promoting Equitable Outcomes: Details will be reported when available.

Performance to be Measured: KPIs for this project are in development and future reports will be updated to include them.

Project ID: ARPA-NE235C, International Tourism Marketing to Recover from Economic Losses in Tourism from Canada, Germany, and the United Kingdom

Funding Amount: \$1,200,000

Project Duration: TBD

Project Expenditure Category: 2.35 Aid to Tourism, Travel, or Hospitality^

Project Overview:

The International Tourism Marketing project will increase digital and co-op marketing budgets for the Lee County Visitor & Convention Bureau (VCB) in three key international markets – Canada, Germany, and the United Kingdom. By allocating extra resources, Lee County will increase the amount of messaging to potential international visitors.

Status of Completion: Not Started

Project Demographic Distribution: N/A for this project

Promoting Equitable Outcomes: Details will be reported when available.

Performance to be Measured: KPIs for this project are in development and future reports will be updated to include them.

Project ID: ARPA-NE235D, Reimbursement Grant to Incentivize Local Meeting Bookings to Rebound from Negative Economic Impact to the Tourism Industry

Funding Amount: \$100,000

Project Duration: March 18, 2022 – September 30, 2024

Project Expenditure Category: 2.35 Aid to Tourism, Travel, or Hospitality^

Project Overview:

The Reimbursement Grant to Incentivize Local Meeting Bookings to Rebound from Negative Economic Impact to the Tourism Industry is a new, fully ARPA funded, government service of Lee County Visitor & Convention Bureau (VCB) to increase group occupancy and revenue for Lee County hotels that have not recovered from the lack of the meetings and conferences market segment since March 2020. The grant seeks to encourage businesses who plan meetings and conferences to consider Lee County when planning in-person meetings and conferences. Through the program, companies that book a meeting with a Lee County hotel have the opportunity to receive up to \$6,500 for the company, association, or organization.

The major activity of the program includes reimbursement of the host company for booking a minimal number of lodging room nights with a peak night of at least 10 lodging rooms, with the exception of sports events, weddings, reunions, group tours or other social events.

Status of Completion: Completed less than 50%

Project Demographic Distribution: N/A for this project

Promoting Equitable Outcomes: Details will be reported when available.

Performance Measured to Date:

Number of Grant Applications	Number of Participating Organizations	Total Room Pickup	Total Room Revenue
16	The first meeting will actualize in October 2022.	TBD	TBD

Project ID: ARPA-NE235E, VCB/EDO/Sports Development Videography & Photography Assets for Tourism Marketing to Counteract Negative Economic Impact

Funding Amount: \$350,000

Project Duration: TBD

Project Expenditure Category: 2.35 Aid to Tourism, Travel, or Hospitality^

Project Overview:

The Visitor and Convention Bureau, Economic Development, and Sports Development will acquire updated and additional photo and video assets (including imagery stock, but not equipment) for use in marketing and social media efforts. The assets will be used to promote local businesses that provide goods and services used by visitors and present-day images of a fresh, revitalized, and business ready Lee County. This is a marketing effort aimed at rebounding from the negative economic impacts on the tourism industry.

Status of Completion: Not Started

Project Demographic Distribution: N/A for this project

Promoting Equitable Outcomes: Details will be reported when available.

Performance to be Measured: KPIs for this project are in development and future reports will be updated to include them.

3. Public Sector Capacity

General Provisions

3.1 Emergency Management Staff (21)

Project ID: ARPA-PS031A

Funding Amount: \$5,580,981

Project Duration: November 2, 2021 – December 31, 2024

Project Expenditure Category: 3.1 Public Sector Workforce: Payroll and Benefits for Public Health, Public Safety, or Human Services Workers

Project Overview:

The pandemic resulted in impacts on Public Safety Emergency Management Services (EMS) and workload. Staffing impacts include quarantine and isolation orders and fatigue from the 18 months of response, in

addition to illness after exposure to COVID-19. EMS Staff have responded to higher-than-normal incident volumes. The EMS workload has increased dramatically, with unique incidents in August 2021 up 31 percent over August 2019 alone. The addition of new EMS positions will allow for increase opportunity for time off without impacting operational readiness. The project will create 21 new EMS positions to address staffing associated with the COVID-19 pandemic (18 EMTs and 3 Lieutenants).

Status of Completion: Not Started

Project Demographic Distribution: N/A for this project

Promoting Equitable Outcomes: N/A for this project

Performance: KPIs for these projects are in development and future reports will be updated to include them.

- ARPA Measure: Number of government FTEs responding to COVID-19 supported under this authority

4. Infrastructure

Water and Sewer

5.1 Fort Myers Beach Water Reclamation Facility (WRF) Major Improvements

Project ID: ARPA-IN051A –Fort Myers Beach Water Reclamation Facility Major Improvements

Funding Amount: \$8,489,875

Project Duration: TBD – December 31, 2024

Project Expenditure Category: 5.1 Clean Water: Centralized Wastewater Treatment

Project Overview:

Details will be provided within future reporting on this Utilities capital improvement projects located at the Fort Myers Beach Water Reclamation Facility (WRF).

Status of Completion: Not Started

Project Demographic Distribution: N/A for these projects

Promoting Equitable Outcomes: N/A for these projects

Performance to be Measured: KPIs for these projects are in development and future reports will be updated to include them.

- Project status as a % complete.
- Projected/actual construction start date
- Projected/actual initiation of operations date (month/year)
- Location
- Davis Bacon certification
- Did the project prioritize local hires
- Did the project have a Community Benefit Agreement

- National Pollutant Discharge Elimination System (NPDES) Permit Number (if applicable; for projects aligned with the Clean Water State Revolving Fund)
- Public Water System (PWS) ID number (if applicable; for projects aligned with the Drinking Water State Revolving Fund)
- Median Household Income of service area
- Lowest Quintile Income of the service area

5.15 Improvements Cyber Security Risk Assessment and Hardware Software Improvements

Project ID: ARPA-IN515A

Funding Amount: \$2,100,000

Project Duration: TBD – December 31, 2024

Project Expenditure Category: 5.15 Drinking water: Other water infrastructure

Project Overview:

Planning stage - Details will be provided within future reporting

Status of Completion: Not Started

Project Demographic Distribution: N/A for this project

Promoting Equitable Outcomes: N/A for this project

Performance to be Measured: KPIs for this project are in development and future reports will be updated to include them.

- Project status as a % complete.

Broadband

5.21 Broadband Gap Analysis

Project ID: ARPA-IN521A

Funding Amount: \$100,000

Project Duration: March 25, 2022 – December 31, 2024

Project Expenditure Category: 5.21 Broadband: Other projects

Project Overview:

The Broadband Gap Analysis project is a vendor contracted new, fully-ARPA funded, Lee County government initiative to identify the community's broadband needs, gaps in service availability and speed requirements, and to formulate a scope of work and options to address the gaps.



The project involves contracting with a consultant to complete a Broadband Availability and Adoption Gap Analysis.

The project activities will (a) Evaluate existing broadband service capabilities and capacities; (b) Detail where gaps exist between capacity and demand; Identify the demand and assess adoption rates for

broadband access; (c) Identify areas that are broadband unserved or underserved, from a broadband capability perspective; with a focus on low-income communities; (d) Review national, state, and local best practices to provide a Board with various options to address Lee County's broadband needs; and (e) Recommend Board options (including cost details) to address the gaps in broadband services that are provided.

Status of Completion: Completed less than 50%

Project Demographic Distribution: N/A for this project

Promoting Equitable Outcomes: The Broadband Gap Analysis focuses on determining the unserved and under-served areas of Lee County.

Performance to be Measured: The completed reported will be shared for planning locally and will also be submitted by the Local Technology Planning Team to the State of Florida's DEO Office of Broadband.

6. Revenue Replacement

6.1 Big Carlos Pass Bridge Project

Project ID: ARPA-RR061A

Funding Amount: \$48,241,146

Project Duration: TBD – December 31, 2024

Project Expenditure Category: 6.1 Provision of Government Services

Project Overview:

Planning stage - Details will be provided within future reporting

Status of Completion: Not Started

Project Demographic Distribution: N/A for this project

Promoting Equitable Outcomes: N/A for this project

Performance to be Measured KPIs for this project are in development and future reports will be updated to include them.

- Project status as a % complete.
- Projected/actual construction start date
- Projected/actual initiation of operations date (month/year)
- Location
- Davis Bacon certification
- Did the project prioritize local hires
- Did the project have a Community Benefit Agreement

7. Administrative

7.1A Consulting Services for Oversight and Compliance of American Rescue Plan Funds

Project ID: ARPA-AD071A, Management Consultant
Funding Amount: \$4,490,266
Project Duration: December 7, 2021 – December 6, 2024
Project Expenditure Category: 7.1 Administrative Expenses

Project Overview:



Services under the contract that may be provided by the consultant include ARPA compliance, reporting, and best-practice operational consulting for County and sub-recipients. Examples may include: Providing technical support for program management including project procurement and compliance; Providing technical support and best practice advice regarding: County and sub-recipient monitoring and management of ARPA fund uses; Project documentation; Tracking project and performance data; Reporting and communication systems for the board, grant sub-recipient and grant fund beneficiaries. Preparing internal and federal reports.

Status of Completion: Completed less than 50%

7.1B Administrative Expenses – Human Services

Project ID: ARPA-AD071B, Human and Veteran Services Grant Management Positions
Funding Amount: \$1,496,756
Project Duration: January 1, 2022 – December 31, 2024 (TBD)
Project Expenditure Category: 7.1 Administrative Expenses

Project Overview:

Staff will be hired to provide grant administration support for the Human Services Department ARPA-related grants. The positions include two Community Impact Coordinators, one Grant Analyst, and one Fiscal Specialist.

Status of Completion: Completed less than 50%