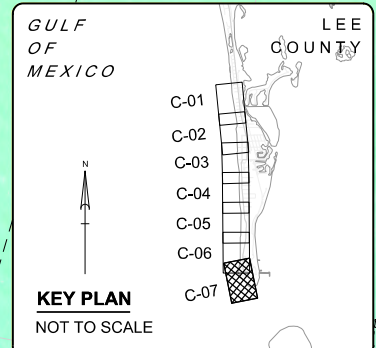
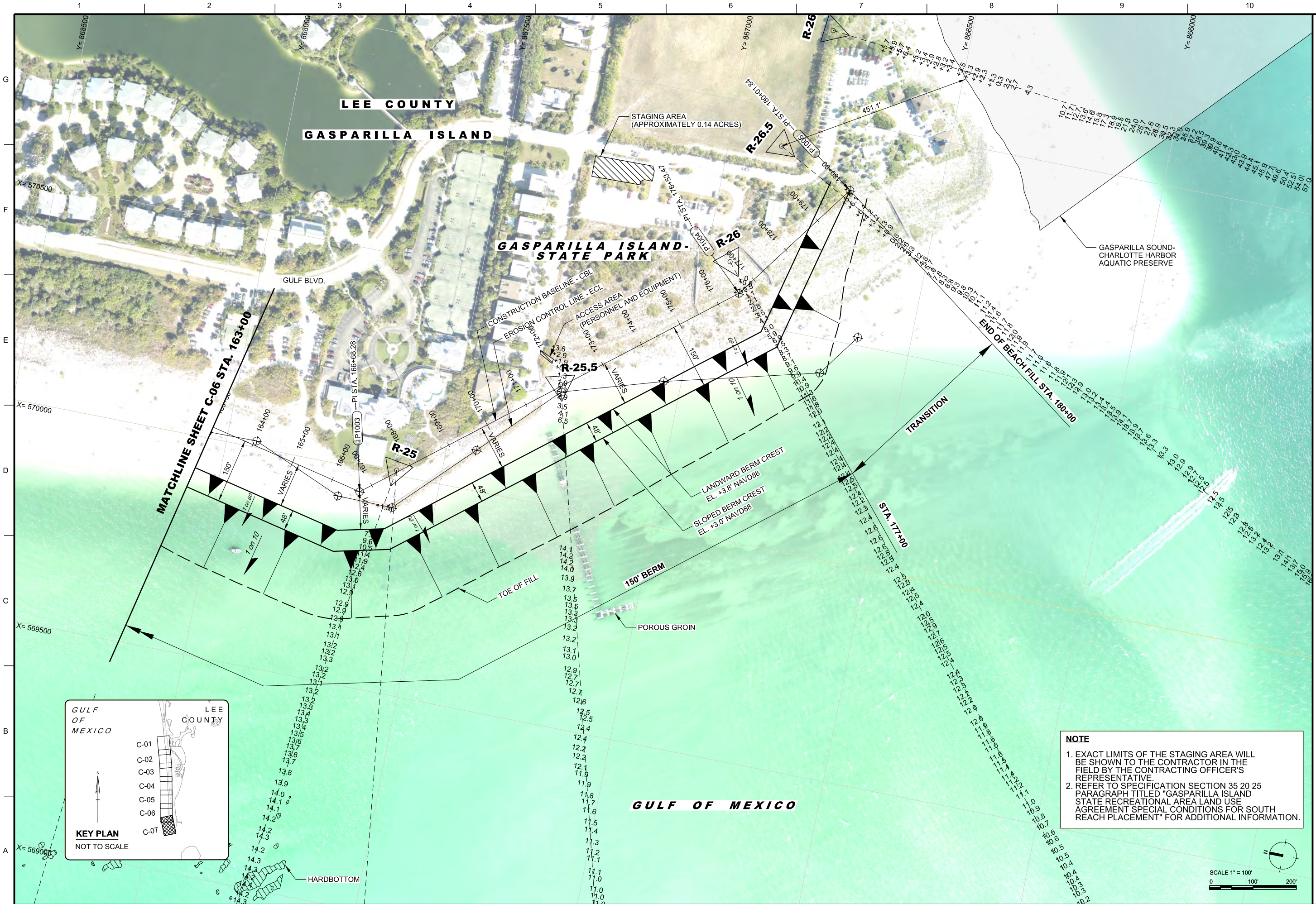


**NOTE**  
 1. REFER TO SPECIFICATION SECTION 35 20 25 PARAGRAPH TITLED "GASPARILLA ISLAND STATE RECREATIONAL AREA LAND USE AGREEMENT SPECIAL CONDITIONS FOR SOUTH REACH PLACEMENT" FOR ADDITIONAL INFORMATION.

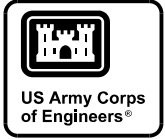
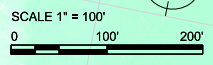
 <b>US Army Corps of Engineers</b>	
DESIGNED BY: U. SAUNDERS DRAWN BY: P. ALSTIN CHECKED BY: J. LAGRONE SUBMITTED BY: ANS/D	ISSUE DATE: FEBRUARY 2019 DRAWING NO.: W91PEB001 CONTRACT NO.: N/A DRAWING DATE: 3/12/2019 FILE NAME: 113085-LCIBR18-CB16AM0004.dwg ANS/D
U.S. ARMY CORPS OF ENGINEERS JACKSONVILLE DISTRICT 701 SAN MARCO BLVD JACKSONVILLE FL 32207	
FLOOD CONTROL AND COASTAL EMERGENCY SHORE PROTECTION PROJECT, BEACH RENOURISHMENT GASPARILLA ISLAND, LEE COUNTY, FLORIDA	
CIVIL BEACH FILL PLACEMENT STA. 137+00 TO STA. 163+00	
SHEET ID  <b>C-06</b>	





**NOTE**

1. EXACT LIMITS OF THE STAGING AREA WILL BE SHOWN TO THE CONTRACTOR IN THE FIELD BY THE CONTRACTING OFFICER'S REPRESENTATIVE.
2. REFER TO SPECIFICATION SECTION 35 20 25 PARAGRAPH TITLED "GASPARILLA ISLAND STATE RECREATIONAL AREA LAND USE AGREEMENT SPECIAL CONDITIONS FOR SOUTH REACH PLACEMENT" FOR ADDITIONAL INFORMATION.



DESIGNED BY:	ISSUE DATE:
DRAWN BY:	FEBRUARY 2019
CHECKED BY:	PROJECT NO.:
SUBMITTED BY:	CONTRACT NO.:
FILE NAME:	DRAWING DATE:
ANSID: 113085-LCIBR18-CB107AMD0004.dwg	3/12/2019

U.S. ARMY CORPS OF ENGINEERS  
 JACKSONVILLE DISTRICT  
 701 SAN MARCO BLVD  
 JACKSONVILLE, FL 32207

FLOOD CONTROL AND COASTAL EMERGENCY  
 SHORE PROTECTION PROJECT, BEACH RENOURISHMENT  
 GASPARILLA ISLAND, LEE COUNTY, FLORIDA

CIVIL  
 BEACH FILL PLAN  
 STA. 163+00 TO 180+00

SHEET ID  
**C-07**